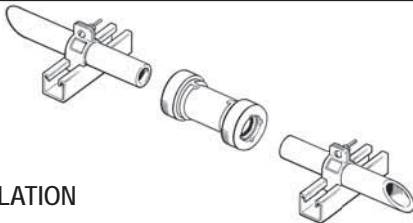




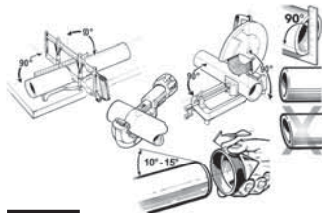
GripLoc™ Coupling Installation Instructions

GLPC-3-1014

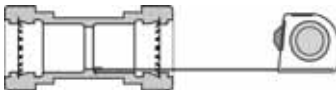


EASY INSTALLATION

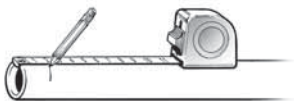
STEP 1 Cut pipe square. Deburr and bevel.



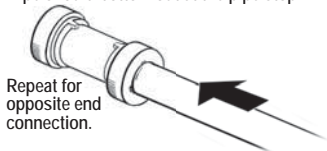
STEP 2 Measure from pipe stop to the end of the coupling.



STEP 3 Measure and mark pipe.



STEP 4 Insert pipe all the way to mark. Pipe should bottom out at the pipe stop.



Repeat for
opposite end
connection.

WARNING: DO NOT INSERT FINGERS. ENSURE THAT PIPE AND FITTINGS ARE FREE OF DIRT AND DEBRIS PRIOR TO INSTALLATION.



SPEARS® MANUFACTURING COMPANY
CORPORATE OFFICE

15853 Olden Street, Sylmar, CA 91342
PO Box 9203, Sylmar, CA 91392
(818) 364-1611 www.spearsmfg.com

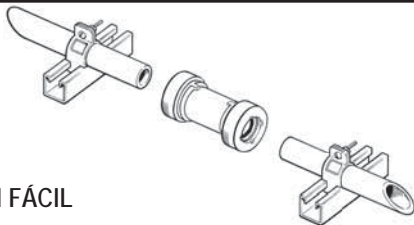




GripLoc™ Acople

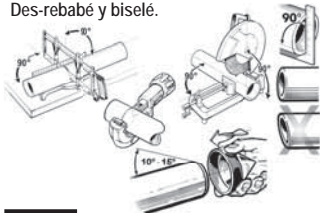
Instrucciones de Instalacion

GLPC-3-1014

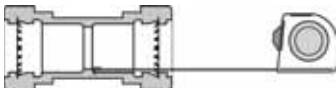


INSTALACIÓN FÁCIL

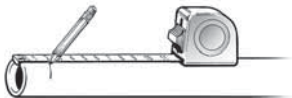
PASO 1 Corté la tubería a escuadra.
Des-rebabé y biselé.



PASO 2 Medir desde la parada del tubo hasta el final del acople.



PASO 3 Medir y marcar el tubo.



PASO 4 Introduzca el tubo hasta adentro con un movimiento de torcer. El tubo debe tocar al fondo de la parada del tubo.



ADVERTENCIA: NO INTRODUZCA LOS DEDOS. ASEGURESE DE QUE EL TUBO Y LAS CONEXIONES ESTÉN LIBRES DE SUCIEDAD Y DESECHOS ANTES DE INSTALAR.



SPEARS® MANUFACTURING COMPANY
CORPORATE OFFICE

15853 Olden Street, Sylmar, CA 91342
PO Box 9203, Sylmar, CA 91392
(818) 364-1611 www.spearsmfg.com

