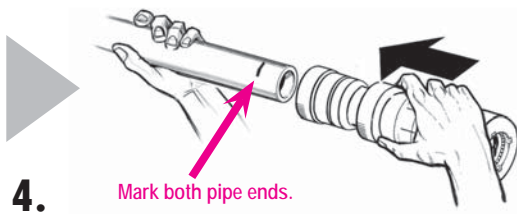
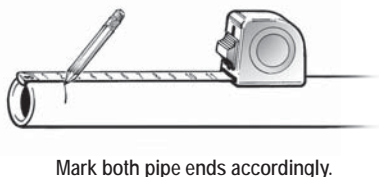
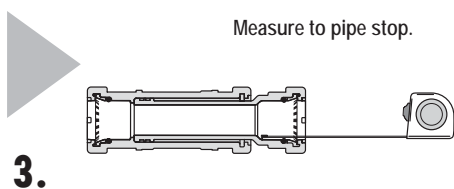
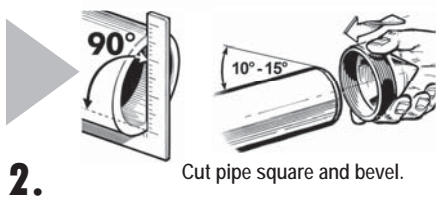
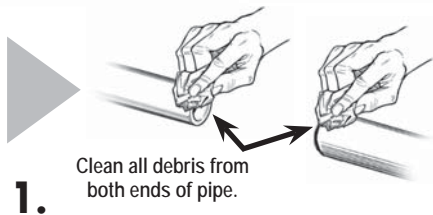
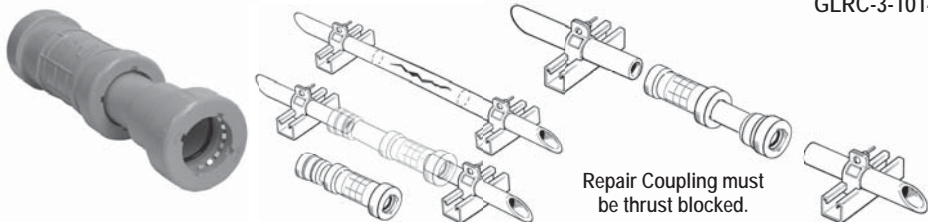


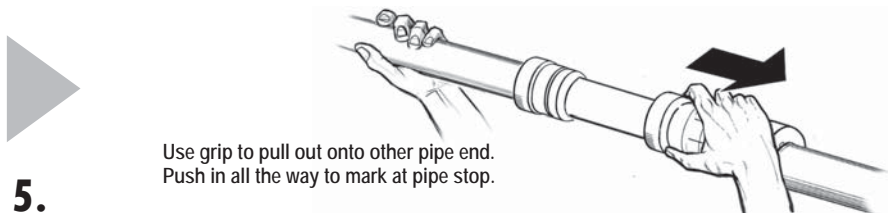


# GripLoc™ Repair Coupling Installation Instructions

GLRC-3-1014



Insert pipe into telescoping end first. Push in all the way to mark at pipe stop.



**WARNING: DO NOT INSERT FINGERS**



SPEARS® MANUFACTURING COMPANY  
CORPORATE OFFICE  
15853 Olden Street, Sylmar, CA 91342  
PO Box 9203, Sylmar, CA 91392  
(818) 364-1611 www.spearsmfg.com

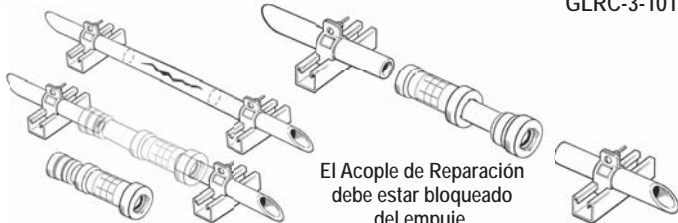




# GripLoc™ Acople de Reparación

## Instrucciones de Instalación

GLRC-3-1014



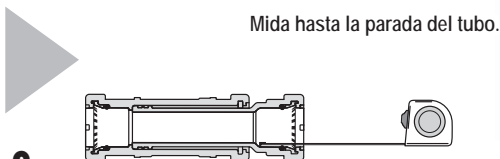
El Acople de Reparación debe estar bloqueado del empuje.



**1.** Limpie cualquier residuo de ambos lados del tubo.

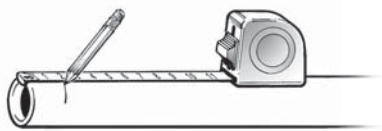


**2.** Corté el tubo a escuadra y biselé.

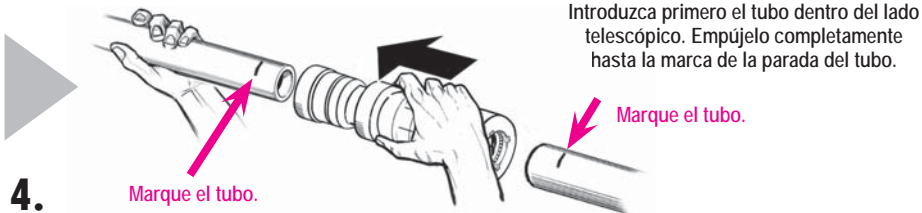


Mida hasta la parada del tubo.

**3.**



Marque el tubo como corresponda.



Introduzca primero el tubo dentro del lado telescópico. Empújelo completamente hasta la marca de la parada del tubo.

**4.**

Marque el tubo.

Marque el tubo.



Agarre para sacarlo sobre el extremo del otro tubo. Empújelo completamente hasta la marca de la parada del tubo.

**5.**

**ADVERTENCIA: NO INTRODUZCA LOS DEDOS**



SPEARS® MANUFACTURING COMPANY  
CORPORATE OFFICE  
15853 Olden Street, Sylmar, CA 91342  
PO Box 9203, Sylmar, CA 91392  
(818) 364-1611 www.spearsmfg.com

