



Marine & Offshore Products

EverTUFF® CPVC Schedule 40 & 80 Marine Pressure Pipe & Fittings

EverTUFF® CPVC Schedule 40 & 80 Marine Pressure Pipe & Fittings



PRODUCT

Contact Spears® for any Information not found.

Marine & Offshore Products

Schedule 40 CPVC Pipe - ABS & USCG Approved & Schedule 80 CPVC Pipe - ABS & USCG Approved & Schedule 80 CPVC Fittings - For use with ABS & USCG Approved Pipe



Schedule 40 CPVC Pipe - ABS & USCG Approved

Part Number	Size	Std Pk	Mstr Ctn	Prod Code	MSRP
-------------	------	--------	----------	-----------	------

Pipe - CPVC Schedule 40 Plain End

10' Lengths, Price Per Foot



CG-PD400-005C10	1/2	10	0	175	2.61
CG-PD400-007C10	3/4	10	0	175	3.49
CG-PD400-010C10	1	10	0	175	5.09
CG-PD400-012C10	1-1/4	10	0	175	6.90
CG-PD400-015C10	1-1/2	10	0	175	8.26
CG-PD400-020C10	2	10	0	175	11.08
CG-PD400-025C10	2-1/2	10	0	175	17.51
CG-PD400-030C10	3	10	0	175	22.86
CG-PD400-040C10	4	10	0	175	32.58
CG-PD400-060C10	6	10	0	175	60.10
CG-PD400-080C10	8	10	0	175	97.90
CG-PD400-100C10	10	10	0	175	167.54
CG-PD400-120C10	12	10	0	175	221.15

Pipe - CPVC Schedule 40 Plain End - MARINE

20' Lengths, Price Per Foot



CG-PD-400-005C	1/2	20	0	175	2.61
CG-PD-400-007C	3/4	20	0	175	3.49
CG-PD-400-010C	1	20	0	175	5.09
CG-PD-400-012C	1-1/4	20	0	175	6.90
CG-PD-400-015C	1-1/2	20	0	175	8.26
CG-PD-400-020C	2	20	0	175	11.08
CG-PD-400-025C	2-1/2	20	0	175	17.51
CG-PD-400-030C	3	20	0	175	22.86
CG-PD-400-040C	4	20	0	175	32.58
CG-PD-400-060C	6	20	0	175	60.10
CG-PD-400-080C	8	20	0	175	97.90
CG-PD-400-100C	10	20	0	175	167.54
CG-PD-400-120C	12	20	0	175	221.15

Schedule 80 CPVC Pipe - ABS & USCG Approved

Pipe - CPVC Schedule 80 Plain End - MARINE

10' Lengths, Price Per Foot



CG-PD800-005C10	1/2	10	0	175	3.06
CG-PD800-007C10	3/4	10	0	175	4.18
CG-PD800-010C10	1	10	0	175	6.15
CG-PD800-012C10	1-1/4	10	0	175	8.46
CG-PD800-015C10	1-1/2	10	0	175	10.26
CG-PD800-020C10	2	10	0	175	14.23
CG-PD800-025C10	2-1/2	10	0	175	21.69

Part Number	Size	Std Pk	Mstr Ctn	Prod Code	MSRP
-------------	------	--------	----------	-----------	------

Pipe - CPVC Schedule 80 Plain End - MARINE (continued)

10' Lengths, Price Per Foot

CG-PD800-030C10	3	10	0	175	29.06
CG-PD800-040C10	4	10	0	175	32.58
CG-PD800-060C10	6	10	0	175	82.70
CG-PD800-080C10	8	10	0	175	134.51
CG-PD800-100C10	10	10	0	175	248.74
CG-PD800-120C10	12	10	0	175	341.93

Pipe - CPVC Schedule 80 Plain End - MARINE

20' Lengths, Price Per Foot



CG-PD-800-005C	1/2	20	0	175	3.06
CG-PD-800-007C	3/4	20	0	175	4.18
CG-PD-800-010C	1	20	0	175	6.15
CG-PD-800-012C	1-1/4	20	0	175	8.46
CG-PD-800-015C	1-1/2	20	0	175	10.26
CG-PD-800-020C	2	20	0	175	14.23
CG-PD-800-025C	2-1/2	20	0	175	21.69
CG-PD-800-030C	3	20	0	175	29.06
CG-PD-800-040C	4	20	0	175	42.49
CG-PD-800-060C	6	20	0	175	60.10
CG-PD-800-080C	8	20	0	175	134.51
CG-PD-800-100C	10	20	0	175	248.74
CG-PD-800-120C	12	20	0	175	341.93

Schedule 80 CPVC Fittings - For use with ABS & USCG Approved Pipe

Tee - MARINE



Socket x Socket x Socket

CG-801-005C	1/2	25	200	172	19.61
CG-801-007C	3/4	15	120	172	19.96
CG-801-010C	1	25	0	172	24.46
CG-801-012C	1-1/4	10	0	172	51.59
CG-801-015C	1-1/2	10	0	172	59.10
CG-801-020C	2	10	0	172	65.78
CG-801-025C	2-1/2	10	0	172	167.46
CG-801-030C	3	5	0	172	167.46
CG-801-040C	4	5	0	172	222.86
CG-801-060C	6	2	0	172	579.98
CG-801-080C	8	2	0	172	1661.33
CG-801-100C	10	1	0	172	3286.61
CG-801-120C	12	1	0	172	5079.39

Tee - Reducing - MARINE



Socket x Socket x Socket

CG-801-101C	3/4X1/2	15	120	172	43.75
CG-801-130C	1X1/2	15	0	172	50.44



Schedule 80 CPVC Fittings - For use with ABS & USCG Approved Pipe

Schedule 80 CPVC Fittings - For use with ABS & USCG Approved Pipe

Part Number	Size	Std Pk	Mstr Ctn	Prod Code	MSRP
-------------	------	--------	----------	-----------	------

Tee - Reducing - MARINE (continued)

Socket x Socket x Socket

CG-801-131C	1X3/4	15	0	172	50.44
CG-801-157C	1-1/4X1X3/4	12	0	172	95.85
CG-801-158C	1-1/4X1X1	15	0	172	62.55
CG-801-159C	1-1/4X1X1-1/4	15	0	172	62.55
CG-801-166C	1-1/4X1/2	10	0	172	115.64
CG-801-167C	1-1/4X3/4	12	0	172	98.69
CG-801-168C	1-1/4X1	15	0	172	98.69
CG-801-202C	1-1/2X1-1/4X1	10	0	172	98.69
CG-801-209C	1-1/2X1/2	10	0	172	103.08
CG-801-210C	1-1/2X3/4	15	0	172	103.08
CG-801-211C	1-1/2X1	10	0	172	103.08
CG-801-212C	1-1/2X1-1/4	10	0	172	103.08
CG-801-247C	2X1/2	10	0	172	122.79
CG-801-248C	2X3/4	10	0	172	122.79
CG-801-249C	2X1	10	0	172	122.79
CG-801-250C	2X1-1/4	10	0	172	170.11
CG-801-251C	2X1-1/2	10	0	172	122.79
CG-801-254C	2X2X4	5	0	172	475.76
CG-801-287C	2-1/2X1/2	10	0	172	141.00
CG-801-288C	2-1/2X3/4	10	0	172	141.00
CG-801-289C	2-1/2X1	10	0	172	141.00
CG-801-290C	2-1/2X1-1/4	10	0	172	141.00
CG-801-291C	2-1/2X1-1/2	10	0	172	141.00
CG-801-292C	2-1/2X2	10	0	172	145.95
CG-801-333C	3X1/2	5	0	172	310.35
CG-801-334C	3X3/4	5	0	172	310.35
CG-801-335C	3X1	5	0	172	250.53
CG-801-336C	3X1-1/4	5	0	172	300.49
CG-801-337C	3X1-1/2	5	0	172	250.53
CG-801-338C	3X2	5	0	172	250.53
CG-801-339C	3X2-1/2	6	0	172	250.53
CG-801-415C	4X1/2	5	0	172	381.00
CG-801-416C	4X3/4	5	0	172	381.00
CG-801-418C	4X1-1/4	5	0	172	381.00
CG-801-419C	4X1-1/2	5	0	172	381.00
CG-801-420C	4X2	5	0	172	316.65
CG-801-421C	4X2-1/2	5	0	172	426.09
CG-801-422C	4X3	5	0	172	316.65
CG-801-426C	4X6	4	0	172	1097.68
CG-801-524C	6X3/4	5	0	172	1089.15
CG-801-525C	6X1	6	0	172	1089.15
CG-801-526C	6X1-1/4	4	0	172	1089.15
CG-801-527C	6X1-1/2	4	0	172	1089.15
CG-801-528C	6X2	6	0	172	1011.94
CG-801-529C	6X2-1/2	4	0	172	1117.18
CG-801-530C	6X3	5	0	172	1011.94
CG-801-532C	6X4	5	0	172	894.30
CG-801-578C	8X2	2	0	172	1890.64
CG-801-580C	8X3	2	0	172	1890.64
CG-801-582C	8X4	2	0	172	1890.64

Part Number	Size	Std Pk	Mstr Ctn	Prod Code	MSRP
-------------	------	--------	----------	-----------	------

Tee - Reducing - MARINE (continued)

Socket x Socket x Socket

CG-801-585C	8X6	2	0	172	1641.68
CG-801-621C	10X2	1	0	172	3309.64
CG-801-623C	10X3	1	0	172	3140.80
CG-801-624C	10X4	1	0	172	3140.80
CG-801-626C	10X6	1	0	172	2892.25
CG-801-628C	10X8	1	0	172	4731.68
CG-801-664C	12X4	1	0	172	5697.18
CG-801-666C	12X6	1	0	172	5336.26
CG-801-668C	12X8	1	0	172	4519.23
CG-801-670C	12X10	1	0	172	6896.44

Tee - Special Reinforced - MARINE



Socket x Socket x SR Fipt - Stainless Steel Collar

CG-802-005CSR	1/2	50	0	172	27.25
CG-802-007CSR	3/4	15	120	172	39.81
CG-802-010CSR	1	15	0	172	50.09
CG-802-012CSR	1-1/4	15	0	172	58.11
CG-802-015CSR	1-1/2	10	0	172	58.11
CG-802-020CSR	2	10	0	172	95.00
CG-802-030CSR	3	5	0	172	136.81
CG-802-040CSR	4	5	0	172	257.74

Tee - Special Reinforced Reducing - MARINE



Socket x Socket x SR Fipt - Stainless Steel Collar

CG-802-101CSR	3/4X1/2	50	0	172	36.41
CG-802-130CSR	1X1/2	50	0	172	22.25
CG-802-131CSR	1X3/4	15	0	172	56.24
CG-802-166CSR	1-1/4X1/2	15	0	172	59.24
CG-802-168CSR	1-1/4X1	10	0	172	60.45
CG-802-211CSR	1-1/2X1	10	0	172	70.98
CG-802-212CSR	1-1/2X1-1/4	10	0	172	70.98
CG-802-247CSR	2X1/2	10	0	172	110.71
CG-802-248CSR	2X3/4	10	0	172	122.99
CG-802-287CSR	2-1/2X1/2	10	0	172	84.58

90° EII - MARINE



Socket x Socket

CG-806-005C	1/2	20	240	172	8.36
CG-806-007C	3/4	20	160	172	10.69
CG-806-010C	1	25	0	172	16.95
CG-806-012C	1-1/4	10	0	172	36.68
CG-806-015C	1-1/2	10	0	172	40.91
CG-806-020C	2	25	0	172	49.39
CG-806-025C	2-1/2	5	0	172	113.73
CG-806-030C	3	6	0	172	128.76
CG-806-040C	4	5	0	172	231.91
CG-806-060C	6	4	0	172	466.01

Marine & Offshore Products
Schedule 80 CPVC Fittings - For use with ABS & USCG Approved Pipe



Schedule 80 CPVC Fittings - For use with ABS & USCG Approved Pipe

Part Number	Size	Std Pk	Mstr Ctn	Prod Code	MSRP
-------------	------	--------	----------	-----------	------

90° EII - MARINE (continued)

Socket x Socket

CG-806-080C	8	2	0	172	1140.39
CG-806-100C	10	1	0	172	3047.55
CG-806-120C	12	1	0	172	4123.33



90° EII - Sweep - MARINE

Socket x Socket

CG-806-005SC	1/2	25	150	172	16.46
CG-806-007SC	3/4	25	100	172	21.23
CG-806-010SC	1	20	0	172	34.09
CG-806-012SC	1-1/4	25	0	172	45.04
CG-806-015SC	1-1/2	25	0	172	48.39
CG-806-020SC	2	25	0	172	58.61



90° EII - Long Sweep - MARINE

Socket x Socket

CG-806-005LSCF	1/2	25	0	172	75.85
CG-806-007LSCF	3/4	25	0	172	84.98
CG-806-010LSCF	1	25	0	172	96.08
CG-806-012LSCF	1 1/4	25	0	172	100.68
CG-806-015LSCF	1 1/2	25	0	172	112.40
CG-806-020LSCF	2	1	10	172	157.68
CG-806-025LSCF	2-1/2	1	7	172	206.74
CG-806-030LSCF	3	1	5	172	218.75
CG-806-040LSCF	4	1	4	172	270.60
CG-806-060LSCF	6	1	2	172	399.06
CG-806-080LSCF	8	1	0	172	1026.48
CG-806-100LSCF	10	1	0	172	1564.14



90° EII - Special Reinforced - MARINE

Socket x SR Fipt - Stainless Steel Collar

CG-807-005CSR	1/2	20	240	172	13.23
CG-807-007CSR	3/4	75	0	172	15.54
CG-807-010CSR	1	50	0	172	18.71
CG-807-012CSR	1-1/4	25	0	172	38.64
CG-807-015CSR	1-1/2	10	0	172	46.44
CG-807-020CSR	2	10	0	172	58.10
CG-807-030CSR	3	5	0	172	84.56
CG-807-040CSR	4	5	0	172	156.15

Part Number	Size	Std Pk	Mstr Ctn	Prod Code	MSRP
-------------	------	--------	----------	-----------	------

90° Street EII - MARINE

Spigot x Socket



CG-809-005C	1/2	50	200	172	10.50
CG-809-007C	3/4	50	0	172	13.35
CG-809-010C	1	50	0	172	21.23
CG-809-012C	1-1/4	25	0	172	45.86
CG-809-015C	1-1/2	10	0	172	51.20
CG-809-020C	2	25	0	172	61.80
CG-809-025C	2-1/2	5	0	172	124.74
CG-809-030C	3	5	0	172	171.73
CG-809-040C	4	4	0	172	309.23
CG-809-060C	6	2	0	172	621.45
CG-809-080C	8	2	0	172	1520.53
CG-809-100C	10	1	0	172	4062.95
CG-809-120C	12	1	0	172	5495.64

11-1/4° EII - MARINE

Socket x Socket



CG-811-005CF	1/2	1	52	172	44.98
CG-811-007CF	3/4	1	20	172	46.35
CG-811-010CF	1	1	50	172	64.11
CG-811-012CF	1-1/4	1	26	172	68.39
CG-811-015C	1-1/2	25	0	172	51.14
CG-811-020C	2	10	0	172	62.55
CG-811-025CF	2-1/2	1	25	172	154.85
CG-811-030C	3	10	0	172	164.23
CG-811-040C	4	4	0	172	225.44
CG-811-060CF	6	1	5	172	432.93
CG-811-080CF	8	1	3	172	822.68
CG-811-100CF	10	1	2	172	1365.60
CG-811-120CF	12	1	2	172	1798.64

45° EII - MARINE

Socket x Socket



CG-817-005C	1/2	20	120	172	10.24
CG-817-007C	3/4	20	120	172	14.78
CG-817-010C	1	15	120	172	23.50
CG-817-012C	1-1/4	10	80	172	46.16
CG-817-015C	1-1/2	10	0	172	47.40
CG-817-020C	2	10	0	172	53.16
CG-817-025C	2-1/2	5	0	172	108.64
CG-817-030C	3	5	0	172	139.58
CG-817-040C	4	5	0	172	191.61
CG-817-060C	6	4	0	172	590.30
CG-817-080C	8	2	0	172	1228.15
CG-817-100C	10	1	0	172	2330.55
CG-817-120C	12	1	0	172	4100.21



Schedule 80 CPVC Fittings - For use with ABS & USCG Approved Pipe

Schedule 80 CPVC Fittings - For use with ABS & USCG Approved Pipe

Part Number	Size	Std Pk	Mstr Ctn	Prod Code	MSRP
-------------	------	--------	----------	-----------	------

15° EII - MARINE

Socket x Socket



CG-818-005CF	1/2	1	20	172	44.98
CG-818-007CF	3/4	1	23	172	46.35
CG-818-010CF	1	1	20	172	64.11
CG-818-012CF	1-1/4	1	15	172	68.39
CG-818-015CF	1-1/2	1	25	172	73.73
CG-818-020CF	2	1	25	172	138.59
CG-818-025CF	2-1/2	1	18	172	154.85
CG-818-030CF	3	1	35	172	172.73
CG-818-040CF	4	1	18	172	225.55
CG-818-060CF	6	1	8	172	432.93
CG-818-080CF	8	1	3	172	822.68
CG-818-100CF	10	1	2	172	1365.60
CG-818-120CF	12	1	0	172	1798.64

45° Street EII - MARINE

Spigot x Socket



CG-827-005C	1/2	50	400	172	10.24
CG-827-007C	3/4	50	0	172	14.78
CG-827-010C	1	50	0	172	23.50
CG-827-012C	1-1/4	25	0	172	46.16
CG-827-015C	1-1/2	25	0	172	47.33
CG-827-020C	2	10	0	172	53.16
CG-827-025C	2-1/2	12	0	172	117.65
CG-827-030C	3	10	0	172	139.58
CG-827-040C	4	5	0	172	191.61
CG-827-060C	6	4	0	172	694.48
CG-827-080C	8	2	0	172	1444.84
CG-827-100C	10	1	0	172	2741.83
CG-827-120C	12	1	0	172	4823.75

Cross - MARINE

Socket x Socket x Socket x Socket



CG-820-005C	1/2	50	0	172	83.60
CG-820-007C	3/4	50	0	172	87.99
CG-820-010C	1	50	0	172	97.53
CG-820-012C	1-1/4	25	0	174	104.35
CG-820-015C	1-1/2	25	0	172	113.41
CG-820-020C	2	10	0	172	147.10
CG-820-025C	2-1/2	10	0	172	196.11
CG-820-030C	3	5	0	172	249.76
CG-820-040C	4	3	0	172	446.16
CG-820-060CF	6	1	0	172	1172.48

Part Number	Size	Std Pk	Mstr Ctn	Prod Code	MSRP
-------------	------	--------	----------	-----------	------

Cross - MARINE (continued)

Socket x Socket x Socket x Socket

CG-820-080CF	8	1	0	172	82.16
CG-820-100CF	10	1	0	172	3317.55
CG-820-120CF	12	1	0	172	4713.74

Coupling - MARINE

Socket x Socket



CG-829-005C	1/2	25	150	172	8.84
CG-829-007C	3/4	15	90	172	12.35
CG-829-010C	1	15	90	172	16.64
CG-829-012C	1-1/4	10	60	172	24.93
CG-829-015C	1-1/2	10	40	172	31.35
CG-829-020C	2	20	0	172	36.46
CG-829-025C	2-1/2	10	0	172	81.11
CG-829-030C	3	5	0	172	88.15
CG-829-040C	4	5	0	172	115.51
CG-829-060C	6	4	0	172	272.06
CG-829-080C	8	4	0	172	735.28
CG-829-100C	10	1	0	172	924.90
CG-829-120C	12	1	0	172	1083.28

Coupling - Reducing - MARINE

Socket x Socket



CG-829-101C	3/4X1/2	50	400	172	23.11
CG-829-130C	1X1/2	25	200	172	32.98
CG-829-131C	1X3/4	25	200	172	32.98
CG-829-166C	1-1/4X1/2	25	0	172	75.51
CG-829-167C	1-1/4X3/4	25	0	172	75.51
CG-829-168C	1-1/4X1	25	0	172	75.51
CG-829-209C	1-1/2X1/2	25	0	172	74.91
CG-829-210C	1-1/2X3/4	25	0	172	74.91
CG-829-211C	1-1/2X3/4	25	0	172	74.91
CG-829-212C	1-1/2X1-1/4	25	0	172	74.91
CG-829-247C	2X1/2	25	0	172	99.05
CG-829-248C	2X3/4	10	80	172	99.05
CG-829-249C	2X1	25	0	172	99.05
CG-829-251C	2X1-1/2	10	40	172	99.05
CG-829-290C	2-1/2X1-1/4	10	0	172	159.93
CG-829-291C	2-1/2X1-1/2	10	0	172	112.79
CG-829-292C	2-1/2X2	10	0	172	112.79
CG-829-335C	3X1	8	0	172	278.96
CG-829-336C	3X1-1/4	6	0	172	287.49
CG-829-337C	3X1-1/2	8	0	172	287.49
CG-829-338C	3X2	10	0	172	227.90
CG-829-339C	3X2-1/2	10	0	172	228.85
CG-829-416C	4X3/4	4	0	172	328.64
CG-829-417C	4X1	4	0	172	328.64
CG-829-419C	4X1-1/2	4	0	172	328.64
CG-829-420C	4X2	6	0	172	271.85
CG-829-421C	4X2-1/2	4	0	172	271.85

Marine & Offshore Products
Schedule 80 CPVC Fittings - For use with ABS & USCG Approved Pipe



Schedule 80 CPVC Fittings - For use with ABS & USCG Approved Pipe

Part Number	Size	Std Pk	Mstr Ctn	Prod Code	MSRP
Coupling - Reducing - MARINE (continued)					
Socket x Socket					
CG-829-422C	4X3	4	0	172	271.85
CG-829-528C	6X2	6	0	172	719.20
CG-829-529C	6X2-1/2	4	0	172	847.59
CG-829-530C	6X3	12	0	172	733.91
CG-829-532C	6X4	4	0	172	617.54
CG-829-580CF	8X3	1	6	172	654.03
CG-829-582C	8X4	2	0	172	1120.58
CG-829-585C	8X6	2	0	172	1069.99
CG-829-621CF	10X2	1	0	172	1211.59
CG-829-623CF	10X3	1	2	172	1016.11
CG-829-624CF	10X4	1	2	172	976.68
CG-829-626C	10X6	1	0	172	1663.98
CG-829-628C	10X8	1	0	172	1663.98
CG-829-664CF	12X4	1	2	172	2173.86
CG-829-666CF	12X6	1	0	172	2021.79
CG-829-668C	12X8	1	0	172	1812.98
CG-829-670CF	12X10	1	2	172	825.04

Grooved Coupling Adapter - MARINE



Groove x Socket

CG-833-012C	1-1/4	10	60	172	39.76
CG-833-015C	1-1/2	10	80	172	52.43
CG-833-020C	2	5	40	172	68.15
CG-833-025C	2-1/2	5	0	172	112.08
CG-833-030C	3	5	0	172	138.19
CG-833-040C	4	5	0	172	235.16
CG-833-060C	6	5	0	172	336.39
CG-833-080CF	8	1	4	172	424.26
CG-833-100CF	10	1	0	172	665.84
CG-833-120CF	12	1	0	172	939.06

Female Adapter - Special Reinforced - MARINE



Socket x SR Fipt - Stainless Steel Collar

CG-835-005CSR	1/2	25	150	172	7.78
CG-835-007CSR	3/4	25	150	172	8.40
CG-835-010CSR	1	25	200	172	19.15
CG-835-012CSR	1-1/4	10	60	172	19.65
CG-835-015CSR	1-1/2	10	80	172	22.80
CG-835-020CSR	2	10	0	172	32.40
CG-835-025CSR	2 1/2	5	0	172	75.33
CG-835-030CSR	3	15	0	172	154.78
CG-835-040CSR	4	5	0	172	257.60
CG-835-060CSR	6	6	0	172	402.43

Part Number	Size	Std Pk	Mstr Ctn	Prod Code	MSRP
-------------	------	--------	----------	-----------	------

Female Adapter - Special Reinforced Reducing - MARINE



Socket x SR Fipt - Stainless Steel Collar

CG-835-074CSR	1/2X3/4	50	400	172	8.40
CG-835-101CSR	3/4X1/2	50	400	172	8.40
CG-835-102CSR	3/4X1	50	0	172	19.15
CG-835-130CSR	1X1/2	50	0	172	19.15
CG-835-131CSR	1X3/4	25	200	172	19.15

Female Adapter - Stainless Steel Transition - MARINE



Socket x Fipt With Type 316 Stainless Steel Thread Insert

CG-835-005CSS	1/2	25	150	172	86.05
CG-835-007CSS	3/4	15	90	172	120.15
CG-835-010CSS	1	15	90	172	210.26
CG-835-012CSS	1-1/4	25	0	172	341.73
CG-835-015CSS	1-1/2	10	40	172	445.80
CG-835-020CSS	2	8	32	172	521.73

Female Adapter - Encapsulated Special Reinforced - MARINE



Socket x ESR Fipt

CG-835-005CESR	1/2	25	300	172	11.91
CG-835-007CESR	3/4	25	300	172	12.58
CG-835-010CESR	1	25	200	172	27.71
CG-835-012CESR	1-1/4	10	80	172	28.36
CG-835-015CESR	1-1/2	10	80	172	36.74
CG-835-020CESR	2	10	0	172	57.09

Male Adapter - MARINE



Mipt x Socket

CG-836-005C	1/2	25	150	172	11.41
CG-836-007C	3/4	25	150	172	13.93
CG-836-102C	3/4X1	25	0	172	51.26
CG-836-131C	1X3/4	25	0	172	48.69
CG-836-010C	1	20	240	172	23.46
CG-836-012C	1-1/4	10	60	172	34.58
CG-836-015C	1-1/2	10	120	172	46.74
CG-836-020C	2	10	80	172	63.40
CG-836-025C	2-1/2	10	0	172	172.85
CG-836-030C	3	5	0	172	232.29
CG-836-040C	4	5	0	172	392.69
CG-836-060C	6	5	0	172	562.80
CG-836-080CF	8	1	2	172	509.25
CG-836-100CF	10	1	2	172	943.59
CG-836-120CF	12	1	0	172	1098.09



Schedule 80 CPVC Fittings - For use with ABS & USCG Approved Pipe

Schedule 80 CPVC Fittings - For use with ABS & USCG Approved Pipe

Part Number	Size	Std Pk	Mstr Ctn	Prod Code	MSRP
-------------	------	--------	----------	-----------	------

Male Adapter - Internal Reinforced - MARINE

R Mipt x Socket - Stainless Steel Sleeve

CG-836-005CR	1/2	25	150	172	11.94
CG-836-007CR	3/4	25	300	172	13.68
CG-836-010CR	1	10	120	172	16.23



Male Spigot Adapter - MARINE

Spigot x Mipt

CG-861-005C	1/2	50	300	172	13.91
CG-861-007C	3/4	25	150	172	17.28
CG-861-010C	1	50	0	172	29.30
CG-861-131C	1X3/4	50	200	172	34.24
CG-861-012C	1-1/4	25	200	172	33.24
CG-861-015C	1-1/2	25	0	172	36.69
CG-861-020C	2	25	0	172	42.94



Reducer Bushing Flush Style - MARINE

Spigot x Socket

CG-837-101C	3/4X1/2	50	300	172	9.43
CG-837-130C	1X1/2	50	400	172	14.65
CG-837-131C	1X3/4	50	300	172	14.65
CG-837-166C	1-1/4X1/2	25	300	172	38.86
CG-837-167C	1-1/4X3/4	25	150	172	38.86
CG-837-168C	1-1/4X1	25	150	172	38.86
CG-837-209C	1-1/2X1/2	25	200	172	43.95
CG-837-210C	1-1/2X3/4	25	200	172	43.95
CG-837-211C	1-1/2X1	25	200	172	43.95
CG-837-212C	1-1/2X1-1/4	25	200	172	43.95
CG-837-247C	2X1/2	10	120	172	56.73
CG-837-248C	2X3/4	10	60	172	56.73
CG-837-249C	2X1	10	120	172	56.73
CG-837-250C	2X1-1/4	10	60	172	56.73
CG-837-251C	2X1-1/2	10	60	172	56.73
CG-837-289C	2-1/2X1	10	80	172	97.54
CG-837-290C	2-1/2X1-1/4	10	80	172	69.06
CG-837-291C	2-1/2X1-1/2	10	40	172	69.06
CG-837-292C	2-1/2X2	15	0	172	69.06
CG-837-333C	3X1/2	10	0	172	122.31
CG-837-334C	3X3/4	10	0	172	120.30
CG-837-335C	3X1	10	0	172	105.24
CG-837-336C	3X1-1/4	10	0	172	105.24
CG-837-337C	3X1-1/2	10	0	172	105.24
CG-837-338C	3X2	10	0	172	105.24
CG-837-339C	3X2-1/2	15	0	172	105.24



Part Number	Size	Std Pk	Mstr Ctn	Prod Code	MSRP
-------------	------	--------	----------	-----------	------

Reducer Bushing Flush Style - MARINE (continued)

Spigot x Socket

CG-837-416C	4X3/4	10	0	172	176.60
CG-837-418C	4X1-1/4	6	0	172	189.20
CG-837-419C	4X1-1/2	6	0	172	176.61
CG-837-420C	4X2	6	0	172	116.35
CG-837-421C	4X2-1/2	6	0	172	116.35
CG-837-422C	4X3	6	0	172	116.35
CG-837-525C	6X1	5	0	172	312.64
CG-837-527C	6X1-1/2	5	0	172	323.51
CG-837-528C	6X2	5	0	172	249.64
CG-837-530C	6X3	5	0	172	249.64
CG-837-532C	6X4	5	0	172	247.89
CG-837-578C	8X2	4	0	172	1076.23
CG-837-580C	8X3	4	0	172	1076.23
CG-837-582C	8X4	4	0	172	1076.23
CG-837-585C	8X6	4	0	172	816.06
CG-837-621C	10X2	2	0	172	1792.86
CG-837-624C	10X4	4	0	172	1792.86
CG-837-626C	10X6	3	0	172	1444.35
CG-837-628C	10X8	3	0	172	1444.35
CG-837-664C	12X4	2	0	172	2943.80
CG-837-668C	12X8	2	0	172	1820.98
CG-837-670CF	12X10	2	0	172	1303.86

¹ Sized with Bushing

Female Spigot Adapter - Special Reinforced - MARINE

Spigot x SR Fipt - Stainless Steel Collar

CG-878-005CSR	1/2	50	600	172	12.26
CG-878-007CSR	3/4	25	300	172	8.74
CG-878-010CSR	1	50	0	172	19.66
CG-878-012CSR	1-1/4	25	0	172	20.33
CG-878-015CSR	1-1/2	25	0	172	23.60
CG-878-020CSR	2	15	0	172	42.99
CG-878-030CSR	3	5	0	172	156.73
CG-878-040CSR	4	5	0	172	263.09



Female Spigot Adapter - Stainless Steel Transition - MARINE

Socket x Fipt With Type 316 Stainless Steel Thread Insert

CG-878-005CSS	1/2	25	150	172	85.25
CG-878-007CSS	3/4	25	150	172	109.65
CG-878-010CSS	1	15	90	172	142.31



Reducer Bushing Flush Style - MARINE

Spigot x Fipt

CG-838-101C	3/4X1/2	50	600	172	10.28
CG-838-130C	1X1/2	50	400	172	13.04
CG-838-131C	1X3/4	50	400	172	13.04
CG-838-166C	1-1/4X1/2	25	150	172	42.09



Marine & Offshore Products
Schedule 80 CPVC Fittings - For use with ABS & USCG Approved Pipe



Schedule 80 CPVC Fittings - For use with ABS & USCG Approved Pipe

Part Number	Size	Std Pk	Mstr Ctn	Prod Code	MSRP
-------------	------	--------	----------	-----------	------

Reducer Bushing Flush Style - MARINE (continued)

Spigot x Fipt

CG-838-167C	1-1/4X3/4	25	300	172	42.09
CG-838-168C	1-1/4X1	25	300	172	42.09
CG-838-207C	1-1/2X1/4	25	200	172	51.84
CG-838-209C	1-1/2X1/2	25	200	172	51.84
CG-838-210C	1-1/2X3/4	25	200	172	51.84
CG-838-211C	1-1/2X1	25	200	172	51.84
CG-838-212C	1-1/2X1-1/4	25	200	172	51.84
CG-838-247C	2X1/2	10	120	172	71.28
CG-838-248C	2X3/4	10	60	172	71.28
CG-838-249C	2X1	10	120	172	71.28
CG-838-250C	2X1-1/4	10	120	172	71.28
CG-838-251C	2X1-1/2	10	120	172	71.28
CG-838-287C	2-1/2X1/2	10	0	172	114.03
CG-838-288C	2-1/2X3/4	10	40	172	114.03
CG-838-289C	2-1/2X1	10	40	172	114.03
CG-838-290C	2-1/2X1-1/4	10	0	172	114.03
CG-838-291C	2-1/2X1-1/2	10	40	172	113.25
CG-838-292C	2-1/2X2	10	40	172	113.25
CG-838-334C	3X3/4	10	0	172	301.73
CG-838-335C	3X1	10	0	172	301.73
CG-838-336C	3X1-1/4	10	0	172	263.95
CG-838-337C	3X1-1/2	10	0	172	263.95
CG-838-338C	3X2	10	0	172	252.45
CG-838-339C	3X2-1/2	10	0	172	254.50
CG-838-420C	4X2	6	0	172	514.43
CG-838-421C	4X2-1/2	6	0	172	514.43
CG-838-422C	4X3	6	0	172	514.43
CG-838-528C	6X2	5	0	172	1037.14
CG-838-530C	6X3	5	0	172	1037.14
CG-838-532C	6X4	5	0	172	1037.14

Reducer Bushing - Special Reinforced - MARINE

Spigot x SR Fipt - Stainless Steel Collar

CG-838-209CSR	1-1/2X1/2	10	120	172	31.10
CG-838-210CSR	1-1/2X3/4	10	120	172	31.10
CG-838-247CSR	2X1/2	10	80	172	42.74
CG-838-248CSR	2X3/4	10	80	172	42.74
CG-838-249CSR	2X1	10	120	172	42.74
CG-838-334CSR	3X3/4	10	0	172	181.00
CG-838-335CSR	3X1	10	0	172	181.00
CG-838-336CSR	3X1-1/4	10	0	172	181.00
CG-838-337CSR	3X1-1/2	10	0	172	181.00
CG-838-528CSR	6X2	5	0	172	622.26
CG-838-530CSR	6X3	5	0	172	622.26
CG-838-532CSR	6X4	5	0	172	659.35



Part Number	Size	Std Pk	Mstr Ctn	Prod Code	MSRP
-------------	------	--------	----------	-----------	------

Cap - MARINE



Socket

CG-847-005C	1/2	25	150	172	13.76
CG-847-007C	3/4	25	300	172	19.61
CG-847-010C	1	15	90	172	34.70
CG-847-012C	1-1/4	10	60	172	37.96
CG-847-015C	1-1/2	10	60	172	37.96
CG-847-020C	2	10	80	172	40.04
CG-847-025C	2-1/2	5	40	172	134.79
CG-847-030C	3	5	0	172	147.74
CG-847-040C	4	5	0	172	150.19
CG-847-060C	6	4	0	172	496.95
CG-847-080C	8	3	0	172	1508.08
CG-847-100CF	10	1	5	172	1259.93
CG-847-120CF	12	1	4	172	1380.85

CAP - MARINE



Fipt

CG-848-005C	1/2	25	150	172	15.29
CG-848-007C	3/4	25	300	172	25.30
CG-848-010C	1	15	90	172	35.44
CG-848-012C	1-1/4	10	60	172	63.19
CG-848-015C	1-1/2	10	120	172	64.74
CG-848-020C	2	10	80	172	93.25
CG-848-025C	2-1/2	5	40	172	215.78
CG-848-030C	3	5	0	172	283.08
CG-848-040C	4	5	0	172	411.21
CG-848-060CF	6	1	4	172	581.78
CG-848-080CF	8	1	0	172	631.28

Cap - Special Reinforced - MARINE

SR Fipt - Stainless Steel Collar

CG-848-005CSR	1/2	50	300	172	8.74
CG-848-007CSR	3/4	25	300	172	15.24
CG-848-030CSR	3	5	0	172	170.08



Plug - MARINE

Spigot

CG-849-005C	1/2	50	300	172	17.53
CG-849-007C	3/4	50	300	172	21.61
CG-849-010C	1	50	200	172	24.40
CG-849-012C	1-1/4	25	100	172	31.10
CG-849-015C	1-1/2	10	120	172	34.14
CG-849-020C	2	10	120	172	45.73
CG-849-025CF ⁴	2-1/2	1	8	172	54.24
CG-849-030CF ⁴	3	1	4	172	124.71





Schedule 80 CPVC Fittings - For use with ABS & USCG Approved Pipe

Schedule 80 CPVC Fittings - For use with ABS & USCG Approved Pipe

Part Number	Size	Std Pk	Mstr Ctn	Prod Code	MSRP
-------------	------	--------	----------	-----------	------

Plug - MARINE (continued)

Spigot

CG-849-040CF ⁴	4	1	4	172	153.90
CG-849-060CF ⁴	6	1	6	172	191.06
CG-849-080CF ⁴	8	1	6	172	513.20
CG-849-100CF ⁴	10	1	2	172	1021.08
CG-849-120CF ⁴	12	1	0	172	1979.00

⁴ Plug fabricated using Cap and pipe spigot.

Plug - MARINE

Mipt



CG-850-005C	1/2	50	500	172	12.44
CG-850-007C	3/4	50	300	172	15.75
CG-850-010C	1	25	175	172	25.91
CG-850-012C	1-1/4	25	150	172	29.45
CG-850-015C	1-1/2	25	150	172	32.46
CG-850-020C	2	10	120	172	44.20
CG-850-025C	2-1/2	5	30	172	75.03
CG-850-030C	3	5	40	172	80.34
CG-850-040C	4	5	0	172	142.56
CG-850-060C	6	6	0	172	200.20
CG-850-080C	8	4	0	172	355.75
CG-850-100CF ⁴	10	1	3	172	1432.61
CG-850-120CF ⁴	12	1	0	172	2185.20

⁴ Plug fabricated using Cap and threaded pipe.

Wye - MARINE

Socket x Socket x Socket



1/2" - 2" - 235 psi Maximum Internal Pressure Rating @ 73°F (23°C)

2-1/2" - 6" - 150 psi Maximum Internal Pressure Rating @ 73°F (23°C)

8" - Larger & All Fabricated Sizes - 100 psi Maximum Internal Pressure Rating @ 73°F (23°C)

CG-875-005C	1/2	25	100	172	22.73
CG-875-007C	3/4	25	0	172	23.48
CG-875-010C	1	20	0	172	39.55
CG-875-012C	1-1/4	20	0	172	59.91
CG-875-015C	1-1/2	20	0	172	64.40
CG-875-020C	2	10	0	172	157.69
CG-875-025C	2-1/2	6	0	172	502.46
CG-875-030C	3	5	0	172	777.53
CG-875-040C	4	4	0	172	822.04
CG-875-060C	6	3	0	172	1125.09
CG-875-080C	8	1	0	172	1921.40

Part Number	Size	Std Pk	Mstr Ctn	Prod Code	MSRP
-------------	------	--------	----------	-----------	------

Wye - Reducing - MARINE

Socket x Socket x Socket



1/2" - 2" - 235 psi Maximum Internal Pressure Rating @ 73°F (23°C)

2-1/2" - 6" - 150 psi Maximum Internal Pressure Rating @ 73°F (23°C)

8" - Larger & All Fabricated Sizes - 100 psi Maximum Internal Pressure Rating @ 73°F (23°C)

CG-875-101C ¹	3/4X1/2	25	0	172	33.56
CG-875-130C ¹	1X1/2	20	0	172	55.30
CG-875-131C ¹	1X3/4	20	0	172	55.30
CG-875-166C ¹	1-1/4X1/2	20	0	172	100.80
CG-875-167C ¹	1-1/4X3/4	20	0	172	100.80
CG-875-168C ¹	1-1/4X1	20	0	172	100.80
CG-875-209C ¹	1-1/2X1/2	20	0	172	110.56
CG-875-210C ¹	1-1/2X3/4	20	0	172	110.56
CG-875-211C ¹	1-1/2X1	20	0	172	110.56
CG-875-212C ¹	1-1/2X1-1/4	20	0	172	110.56
CG-875-247C ¹	2X1/2	10	0	172	218.78
CG-875-248C ¹	2X3/4	10	0	172	218.78
CG-875-249C ¹	2X1	10	0	172	218.78
CG-875-250C ¹	2X1-1/4	10	0	172	218.78
CG-875-251C ¹	2X1-1/2	10	0	172	218.78
CG-875-335C ¹	3X1	5	0	172	899.94
CG-875-336C ¹	3X1-1/4	5	0	172	899.94
CG-875-337C ¹	3X1-1/2	5	0	172	899.94
CG-875-338C ¹	3X2	4	0	172	899.94
CG-875-339C ¹	3X2-1/2	5	0	172	899.94
CG-875-420C	4X2	4	0	172	910.01
CG-875-422C	4X3	4	0	172	910.01
CG-875-528C ¹	6X2	5	0	172	1152.64
CG-875-530C ¹	6X3	5	0	172	1152.41
CG-875-532C	6X4	5	0	172	879.96
CG-875-578C ¹	8X2	2	0	172	3048.08
CG-875-580C ¹	8X3	2	0	172	3048.08
CG-875-582C	8X4	2	0	172	3048.08
CG-875-585C ¹	8X6	1	0	172	2793.34
CG-875-626C	10X6	1	0	172	3148.85
CG-875-628C	10X8	1	0	172	3315.41

¹ Sized with Bushing

Union 2000 - Socket/FKM - MARINE

Socket x Socket with FKM O-ring Seal



235 psi Maximum Internal Pressure Rating @ 73°F (23°C)

CG-8057-005C	1/2	20	120	172	37.93
CG-8057-007C	3/4	20	80	172	39.61
CG-8057-010C	1	15	90	172	47.55
CG-8057-012C	1-1/4	10	0	172	96.21
CG-8057-015C	1-1/2	10	0	172	97.96
CG-8057-020C	2	5	0	172	162.39
CG-8057-025C	2-1/2	5	0	172	266.31

Marine & Offshore Products
Schedule 80 CPVC Fittings - For use with ABS & USCG Approved Pipe



Schedule 80 CPVC Fittings - For use with ABS & USCG Approved Pipe

Part Number	Size	Std Pk	Mstr Ctn	Prod Code	MSRP
-------------	------	--------	----------	-----------	------

Union 2000 - Socket/FKM - MARINE (continued)

Socket x Socket with FKM O-ring Seal

CG-8057-030C	3	5	0	172	337.04
CG-8057-040C	4	4	0	172	430.59
CG-8057-060C	6	1	0	172	956.89

Union 2000 - Fipt/FKM - MARINE

Fipt x Fipt with FKM O-ring Seal



235 psi Maximum Internal Pressure Rating @ 73°F (23°C)

CG-8058-005C	1/2	20	120	172	40.61
CG-8058-007C	3/4	20	80	172	71.79
CG-8058-010C	1	15	90	172	98.99
CG-8058-012C	1-1/4	10	0	172	188.61
CG-8058-015C	1-1/2	10	0	172	188.61
CG-8058-020C	2	5	0	172	213.20
CG-8058-025C	2-1/2	5	0	172	343.48
CG-8058-030C	3	5	0	172	651.74
CG-8058-040C	4	4	0	172	700.58
CG-8058-060C	6	1	0	172	1556.89

Union 2000 - Socket/EPDM - MARINE

Socket x Socket with EPDM O-ring Seal



235 psi Maximum Internal Pressure Rating @ 73°F (23°C)

CG-8097-005C	1/2	20	120	172	37.80
CG-8097-007C	3/4	20	80	172	39.15
CG-8097-010C	1	15	90	172	46.90
CG-8097-012C	1-1/4	10	0	172	94.98
CG-8097-015C	1-1/2	10	0	172	96.78
CG-8097-020C	2	5	0	172	160.39
CG-8097-025C	2-1/2	5	0	172	265.61
CG-8097-030C	3	5	0	172	332.76
CG-8097-040C	4	4	0	172	425.71
CG-8097-060C	6	1	0	172	946.01

Union 2000 - Fipt/EPDM - MARINE

Fipt x Fipt with EPDM O-ring Seal



Fipt x Fipt with EPDM O-ring Seal

CG-8098-005C	1/2	20	120	172	40.10
CG-8098-007C	3/4	20	80	172	70.90
CG-8098-010C	1	15	90	172	97.78
CG-8098-012C	1-1/4	10	0	172	186.43
CG-8098-015C	1-1/2	10	0	172	186.43
CG-8098-020C	2	5	0	172	210.60
CG-8098-025C	2-1/2	5	0	172	296.70
CG-8098-030C	3	5	0	172	590.31

Part Number	Size	Std Pk	Mstr Ctn	Prod Code	MSRP
-------------	------	--------	----------	-----------	------

Union 2000 - Fipt/EPDM - MARINE (continued)

Fipt x Fipt with EPDM O-ring Seal

CG-8098-040C	4	4	0	172	687.25
CG-8098-060C	6	1	0	172	1527.19

Union 2000 - Special Reinforced Fipt/FKM - MARINE

SR Fipt x SR Fipt w/FKM O-ring Seal - Stainless Steel Collar



235 psi Maximum Internal Pressure Rating @ 73°F (23°C)

CG-8058-005CSR	1/2	20	120	172	22.93
CG-8058-007CSR	3/4	20	80	172	39.96
CG-8058-010CSR	1	15	90	172	54.93
CG-8058-012CSR	1-1/4	10	0	172	103.51
CG-8058-015CSR	1-1/2	10	0	172	112.96
CG-8058-020CSR	2	5	0	172	119.03
CG-8058-025CSR	2-1/2	5	0	172	206.06
CG-8058-030CSR	3	5	0	172	336.35
CG-8058-040CSR	4	4	0	172	394.05
CG-8058-060CSR	6	1	0	172	887.44

Union 2000 - Special Reinforced Fipt/EPDM - MARINE

SR Fipt x SR Fipt w/EPDM O-ring Seal - Stainless Steel Collar



235 psi Maximum Internal Pressure Rating @ 73°F (23°C)

CG-8098-005CSR	1/2	20	160	172	22.16
CG-8098-007CSR	3/4	20	80	172	39.59
CG-8098-010CSR	1	15	90	172	54.29
CG-8098-012CSR	1-1/4	10	0	172	102.51
CG-8098-015CSR	1-1/2	10	0	172	112.09
CG-8098-020CSR	2	5	0	172	117.85
CG-8098-025CSR	2-1/2	5	0	172	203.68
CG-8098-030CSR	3	5	0	172	331.15
CG-8098-040CSR	4	4	0	172	383.36
CG-8098-060CSR	6	1	0	172	851.93

Tank Adapters, CPVC New Style Standard with Neoprene Gaskets - MARINE

Socket x Socket



150 psi Maximum Internal Pressure Rating @ 73°F (23°C)

CG-8170-005C	1/2	25	0	172	66.94
CG-8170-007C	3/4	25	0	172	79.64
CG-8170-010C	1	25	0	172	89.39
CG-8170-012C	1-1/4	20	0	172	114.00
CG-8170-015C	1-1/2	20	0	172	124.14
CG-8170-020C	2	15	0	172	175.24
CG-8170-025C	2-1/2	4	0	172	257.55
CG-8170-030C	3	4	0	172	306.56
CG-8170-040C	4	2	0	172	510.90
CG-8170-060C	6	1	0	172	1405.00
CG-8170-080C	8	1	0	172	3122.00



Schedule 80 CPVC Fittings - For use with ABS & USCG Approved Pipe

Schedule 80 CPVC Fittings - For use with ABS & USCG Approved Pipe

Part Number	Size	Std Pk	Mstr Ctn	Prod Code	MSRP
-------------	------	--------	----------	-----------	------

Tank Adapters, CPVC New Style Standard with EPDM Gaskets -MARINE

Socket x Socket

150 psi Maximum Internal Pressure Rating @ 73°F (23°C)

CG-8170E-005C	1/2	25	0	172	76.14
CG-8170E-007C	3/4	25	0	172	85.45
CG-8170E-010C	1	25	0	172	99.23
CG-8170E-012C	1-1/4	20	0	172	125.56
CG-8170E-015C	1-1/2	20	0	172	131.75
CG-8170E-020C	2	15	0	172	189.95
CG-8170E-025C	2-1/2	4	0	172	269.80
CG-8170E-030C	3	4	0	172	321.23
CG-8170E-040C	4	2	0	172	533.21
CG-8170E-060C	6	1	0	172	1463.54
CG-8170E-080C	8	1	0	172	3213.26



Tank Adapters, CPVC New Style Standard with FKM Gaskets - MARINE

Socket x Socket

150 psi Maximum Internal Pressure Rating @ 73°F (23°C)

CG-8170V-005C	1/2	25	0	172	99.83
CG-8170V-007C	3/4	25	0	172	114.84
CG-8170V-010C	1	25	0	172	132.94
CG-8170V-012C	1-1/4	20	0	172	163.34
CG-8170V-015C	1-1/2	20	0	172	170.28
CG-8170V-020C	2	15	0	172	257.79
CG-8170V-025C	2-1/2	4	0	172	371.04
CG-8170V-030C	3	4	0	172	441.73
CG-8170V-040C	4	2	0	172	978.39
CG-8170V-060C	6	1	0	172	2458.83
CG-8170V-080C	8	1	0	172	5751.83



Tank Adapter, CPVC Self Aligning with Neoprene Gasket - MARINE

Fipt

75 psi Maximum Internal Pressure Rating @ 73°F (23°C)

CG-8172SA-010C	1	5	0	172	292.68
CG-8172SA-020C	2	4	0	172	441.73
CG-8172SA-030C	3	2	0	172	688.30



Tank Adapter, CPVC Self Aligning with EPDM Gasket - MARINE

Fipt

Tank Adapter, CPVC Self Aligning with EPDM Gasket

CG-8172ESA-010C	1	5	0	172	307.69
CG-8172ESA-020C	2	4	0	172	465.98



Part Number	Size	Std Pk	Mstr Ctn	Prod Code	MSRP
-------------	------	--------	----------	-----------	------

Tank Adapter, CPVC Self Aligning with EPDM Gasket - MARINE

(continued)

Fipt

CG-8172ESA-030C	3	2	0	172	724.75
-----------------	---	---	---	-----	--------

Tank Adapter, CPVC Self Aligning with FKM Gasket - MARINE

Fipt

75 psi Maximum Internal Pressure Rating @ 73°F (23°C)

CG-8172VSA-010C	1	25	0	172	608.14
CG-8172VSA-020C	2	15	0	172	920.51
CG-8172VSA-030C	3	4	0	172	1430.23



Flange One Piece - MARINE

Socket

150 psi Maximum Internal Pressure Rating @ 73°F (23°C)

CG-851-005C	1/2	25	0	172	37.21
CG-851-007C	3/4	25	0	172	38.08
CG-851-010C	1	15	0	172	41.58
CG-851-012C	1-1/4	15	0	172	50.75
CG-851-015C	1-1/2	20	0	172	56.33
CG-851-020C	2	10	0	172	68.19
CG-851-025C	2-1/2	10	0	172	141.29
CG-851-030C	3	10	0	172	147.74
CG-851-040C	4	5	0	172	199.61
CG-851-060C	6	5	0	172	340.04
CG-851-080C	8	2	0	172	1021.95
CG-851-100C	10	2	0	172	1273.69
CG-851-120C	12	2	0	172	1789.10



Flange - Blind = MARINE

150 psi Maximum Internal Pressure Rating @ 73°F (23°C)

CG-853-005C	1/2	25	100	172	55.79
CG-853-007C	3/4	25	0	172	60.49
CG-853-010C	1	20	0	172	75.41
CG-853-012C	1-1/4	20	0	172	85.31
CG-853-015C	1-1/2	15	0	172	119.41
CG-853-020C	2	10	0	172	125.45
CG-853-025C	2-1/2	10	0	172	189.76
CG-853-030C	3	10	0	172	235.91
CG-853-040C	4	8	0	172	319.55
CG-853-060C	6	5	0	172	536.03
CG-853-080C	8	5	0	172	994.25
CG-853-100C	10	3	0	172	1792.74
CG-853-120C	12	2	0	172	3011.80



Marine & Offshore Products
Schedule 80 CPVC Fittings - For use with ABS & USCG Approved Pipe



Schedule 80 CPVC Fittings - For use with ABS & USCG Approved Pipe

Part Number	Size	Std Pk	Mstr Ctn	Prod Code	MSRP
-------------	------	--------	----------	-----------	------

Flange Van Stone Style with Plastic Ring - MARINE

Socket

150 psi = maximum internal pressure rating @ 73°F (23°C)

CG-854-005C	1/2	25	0	172	37.46
CG-854-007C	3/4	25	0	172	38.31
CG-854-010C	1	15	0	172	41.84
CG-854-012C	1-1/4	15	0	172	51.08
CG-854-015C	1-1/2	20	0	172	56.73
CG-854-020C	2	10	0	172	68.69
CG-854-025C	2-1/2	10	0	172	142.29
CG-854-030C	3	10	0	172	148.98
CG-854-040C	4	5	0	172	201.18
CG-854-060C	6	5	0	172	342.81
CG-854-080C	8	2	0	172	1031.48
CG-854-100C	10	2	0	172	2483.11
CG-854-120C	12	2	0	172	3726.01

Flange Van Stone Style with Plastic Ring - MARINE

Spigot

150 psi Maximum Internal Pressure Rating @ 73°F (23°C)

CG-856-005C	1/2	25	0	172	43.33
CG-856-007C	3/4	25	0	172	46.51
CG-856-010C	1	15	0	172	52.81
CG-856-012C	1-1/4	15	0	172	65.34
CG-856-015C	1-1/2	15	0	172	72.26
CG-856-020C	2	10	0	172	101.14
CG-856-025C	2-1/2	10	0	172	158.41
CG-856-030C	3	10	0	172	173.46
CG-856-040C	4	5	0	172	178.50
CG-856-060C	6	4	0	172	389.75
CG-856-080C	8	2	0	172	794.45
CG-856-100C	10	2	0	172	2667.68
CG-856-120C	12	2	0	172	4007.25

Flange Van Stone Style Class 300 Bolt Pattern Fabricated with Plastic Ring - MARINE

Socket

Molded with fabricated ring - 150 psi = maximum internal pressure rating @ 73°F (23°C)

CG-854005CL300C	1/2	1	25	172	285.09
CG-854007CL300C	3/4	1	25	172	381.96
CG-854010CL300C	1	1	15	172	465.75
CG-854012CL300C	1-1/4	15	0	172	494.80
CG-854015CL300C	1-1/2	20	0	172	513.78
CG-854020CL300C	2	10	0	172	570.73

Part Number	Size	Std Pk	Mstr Ctn	Prod Code	MSRP
-------------	------	--------	----------	-----------	------

Flange Van Stone Style Class 300 Bolt Pattern Fabricated with Plastic Ring - MARINE (continued)

Socket

CG-854025CL300C	2-1/2	10	0	172	679.14
CG-854030CL300C	3	10	0	172	738.05
CG-854040CL300C	4	5	0	172	1163.95
CG-854060CL300C	6	4	0	172	2197.94
CG-854080CL300C	8	3	0	172	2529.14
CG-854100CL300C	10	2	0	172	2859.55
CG-854120CL300C	12	1	0	172	3572.45

Flange One Piece Multi-Bolt Pattern* - MARINE

ASTM Socket x Multi-bolt Pattern Ring

150 psi Maximum Internal Pressure Rating @ 73°F (23°C)

CG-M851-100C	10	2	0	172	718.49
CG-M851-120C	12	2	0	172	1107.34

Hubs fit 10" and 12" ASTM IPS pipe. Rings are manufactured to accept bolt patterns in size 10" and 12" in ANSI Class 150, B.S. 4504 PN10, B.S. 4504 PN16, B.S. 10 Table E for size 10". Consult Spears® Manufacturing Company Technical Services for additional information. Not for use with wafer valves.

Flange Van Stone Style with Plastic Ring ASTM - MARINE

Socket x Multi-bolt Pattern Ring

150 psi Maximum Internal Pressure Rating @ 73°F (23°C)

CG-M854-020C	2	10	0	172	67.35
CG-M854-060C	6	4	0	172	342.81
CG-M854-080C	8	2	0	172	1031.48

Flange Van Stone Style with PN 10/16 Drilling CPVC Ring

ASTM Socket x DIN PN 10/16 Drilling

150 psi Maximum Internal Pressure Rating @ 73°F (23°C)

CG-854-030CDIN	3	10	0	172	148.98
CG-854-040CDIN	4	5	0	172	201.18

Hubs fit 3" or 4" ASTM IPS Pipe. Rings are manufactured to DIN 8063-4 PN 10 and PN 16 bolt patterns.

Clamp-On Saddle x Socket Single Outlet, CPVC Gray - MARINE

with EPDM O-ring Seal & SS Hardware

2"- 4" 235, 6" 200, 8"-12" 150 psi @ 73°F (23°C)

CG-866S-247C	2X1/2	1	10	172	116.16
CG-866S-248C	2X3/4	1	10	172	116.16
CG-866S-249C	2X1	1	10	172	116.16
CG-866S-250C	2X1-1/4	1	10	172	116.16
CG-866S-251C	2X1-1/2	1	10	172	116.16
CG-866S-291C	2-1/2X1-1/2	1	10	172	154.85



Schedule 80 CPVC Fittings - For use with ABS & USCG Approved Pipe

Schedule 80 CPVC Fittings - For use with ABS & USCG Approved Pipe

Part Number	Size	Std Pk	Mstr Ctn	Prod Code	MSRP
-------------	------	--------	----------	-----------	------

Clamp-On Saddle x Socket Single Outlet, CPVC Gray - MARINE

(continued)

with EPDM O-ring Seal & SS Hardware

CG-866S-333C	3X1/2	1	10	172	154.85
CG-866S-334C	3X3/4	1	10	172	154.85
CG-866S-335C	3X1	1	10	172	154.85
CG-866S-336C	3X1-1/4	1	10	172	154.85
CG-866S-337C	3X1-1/2	1	10	172	154.85
CG-866S-338C	3X2	1	10	172	154.85
CG-866S-415C	4X1/2	1	10	172	198.11
CG-866S-416C	4X3/4	1	10	172	198.11
CG-866S-417C	4X1	1	8	172	198.11
CG-866S-418C	4X1-1/4	1	8	172	198.11
CG-866S-419C	4X1-1/2	1	8	172	198.11
CG-866S-420C	4X2	1	8	172	198.11
CG-866S-421C	4X2-1/2	1	4	172	206.48
CG-866S-422C	4X3	1	4	172	217.08
CG-866S-523C	6X1/2	1	4	172	312.19
CG-866S-524C	6X3/4	1	4	172	312.19
CG-866S-525C	6X1	1	4	172	312.19
CG-866S-526C	6X1-1/4	1	4	172	312.19
CG-866S-529C	6X2-1/2	1	4	172	330.45
CG-866S-530C	6X3	1	4	172	350.49
CG-866S-532C	6X4	1	4	172	366.65
CG-866S-573C	8X1/2	1	0	172	586.31
CG-866S-574C	8X3/4	1	0	172	586.31
CG-866S-575C	8X1	1	0	172	586.31
CG-866S-576C	8X1-1/4	1	0	172	586.31
CG-866S-577C	8X1-1/2	1	0	172	586.31
CG-866S-578C	8X2	1	0	172	586.31
CG-866S-579C	8X2-1/2	1	0	172	644.81
CG-866S-580C	8X3	1	0	172	677.10
CG-866S-582C	8X4	1	0	172	717.74
CG-866S-585C	8X6	1	0	172	796.46
CG-866S-624C	10X4	1	0	172	948.48
CG-866S-626C	10X6	1	0	172	1089.99
CG-866S-664C	12X4	1	0	172	1187.93
CG-866S-666C	12X6	1	0	172	1378.05

¹ Outlet-sized with Bushing



Clamp-On Saddle x Socket Single Outlet, CPVC Gray - MARINE

with FKM O-ring Seal & SS Hardware

2"- 4" 235, 6" 200, 8"-12" 150 psi @ 73°F (23°C)

CG-866SV-247C	2X1/2	1	10	172	119.84
CG-866SV-248C	2X3/4	1	10	172	119.84
CG-866SV-249C	2X1	1	10	172	119.84
CG-866SV-250C	2X1-1/4	1	10	172	119.84
CG-866SV-251C	2X1-1/2	1	10	172	119.84

Part Number	Size	Std Pk	Mstr Ctn	Prod Code	MSRP
-------------	------	--------	----------	-----------	------

Clamp-On Saddle x Socket Single Outlet, CPVC Gray - MARINE

(continued)

with FKM O-ring Seal & SS Hardware

CG-866SV-291C	2-1/2X1-1/2	1	10	172	160.54
CG-866SV-333C	3X1/2	1	10	172	160.54
CG-866SV-334C	3X3/4	1	10	172	160.54
CG-866SV-335C	3X1	1	10	172	160.54
CG-866SV-336C	3X1-1/4	1	10	172	160.54
CG-866SV-337C	3X1-1/2	1	10	172	160.54
CG-866SV-338C	3X2	1	10	172	160.54
CG-866SV-415C	4X1/2	1	10	172	207.36
CG-866SV-416C	4X3/4	1	10	172	207.36
CG-866SV-417C	4X1	1	8	172	207.36
CG-866SV-418C	4X1-1/4	1	8	172	207.36
CG-866SV-420C	4X2	1	8	172	207.36
CG-866SV-421C	4X2-1/2	1	4	172	219.48
CG-866SV-419C	4X1-1/2	1	8	172	207.36
CG-866SV-422C	4X3	1	4	172	230.65
CG-866SV-523C	6X1/2	1	4	172	330.18
CG-866SV-524C	6X3/4	1	4	172	330.18
CG-866SV-525C	6X1	1	4	172	330.18
CG-866SV-526C	6X1-1/4	1	4	172	330.18
CG-866SV-527C	6X1-1/2	1	4	172	330.18
CG-866SV-528C	6X2	1	4	172	330.18
CG-866SV-529C	6X2-1/2	1	4	172	343.26
CG-866SV-530C	6X3	1	4	172	355.19
CG-866SV-532C	6X4	1	4	172	377.53
CG-866SV-573C	8X1/2	1	0	172	609.20
CG-866SV-574C	8X3/4	1	0	172	609.20
CG-866SV-575C	8X1	1	0	172	609.20
CG-866SV-576C	8X1-1/4	1	0	172	609.20
CG-866SV-577C	8X1-1/2	1	0	172	609.20
CG-866SV-578C	8X2	1	0	172	609.20
CG-866SV-579C	8X2-1/2	1	0	172	644.81
CG-866SV-580C	8X3	1	0	172	703.78
CG-866SV-582C	8X4	1	0	172	745.98
CG-866SV-585C	8X6	1	0	172	827.93
CG-866SV-624C	10X4	1	0	172	985.16
CG-866SV-626C	10X6	1	0	172	1133.09
CG-866SV-664C	12X4	1	0	172	1234.85
CG-866SV-666C	12X6	1	0	172	1432.59

¹ Outlet-sized with Bushing



Hot-Tap Saddle CPVC Gray - MARINE

EPDM with Stainless Steel Cutter & Bolts

2"- 4" 235, 6" 200, 8" 150 psi @ 73°F (23°C)

CG-HT2S-248C	2X3/4	1	5	172	183.33
CG-HT2S-251C	2X1-1/2	1	5	172	378.90
CG-HT2S-288C	2-1/2X3/4	1	5	172	195.96
CG-HT2S-291C	2-1/2X1-1/2	1	5	172	391.73

Marine & Offshore Products
Schedule 80 CPVC Fittings - For use with ABS & USCG Approved Pipe



Schedule 80 CPVC Fittings - For use with ABS & USCG Approved Pipe

Part Number	Size	Std Pk	Mstr Ctn	Prod Code	MSRP
Hot-Tap Saddle CPVC Gray - MARINE (continued)					
EPDM with Stainless Steel Cutter & Bolts					
CG-HT2S-334C	3X3/4	1	5	172	224.70
CG-HT2S-337C	3X1-1/2	1	5	172	431.85
CG-HT2S-416C	4X3/4	1	5	172	259.53
CG-HT2S-419C	4X1-1/2	1	0	172	456.73
CG-HT2S-524C	6X3/4	1	5	172	291.30
CG-HT2S-527C	6X1-1/2	1	0	172	486.04
CG-HT2S-574C	8X3/4	1	0	172	314.94
CG-HT2S-577C	8X1-1/2	1	0	172	525.55
Lead Free					



Hot-Tap Saddle CPVC Gray - MARINE

FKM with Stainless Steel Cutter & Bolts

2" - 4" 235, 6" 200, 8" 150 psi @ 73°F (23°C)

CG-HT3S-248C	2X3/4	1	5	172	199.65
CG-HT3S-251C	2X1-1/2	1	5	172	411.48
CG-HT3S-288C	2-1/2X3/4	1	5	172	213.06
CG-HT3S-291C	2-1/2X1-1/2	1	5	172	424.73
CG-HT3S-334C	3X3/4	1	5	172	243.23
CG-HT3S-337C	3X1-1/2	1	5	172	477.90
CG-HT3S-416C	4X3/4	1	5	172	281.53
CG-HT3S-419C	4X1-1/2	1	0	172	496.03
CG-HT3S-524C	6X3/4	1	5	172	316.78
CG-HT3S-527C	6X1-1/2	1	0	172	526.35
CG-HT3S-574C	8X3/4	1	0	172	342.43
CG-HT3S-577C	8X1-1/2	1	5	172	569.04
Lead Free					



Fabricated Expansion Joints - CPVC - MARINE

6" Travel with EPDM O-rings

1/2" - 2" 235 psi @ 73°F (23°C)
 2-1/2" - 12" 150 psi @ 73°F (23°C)

CG-826E-005X6C	1/2	10	0	172	497.81
CG-826E-007X6C	3/4	6	0	172	544.73
CG-826E-010X6C	1	5	0	172	525.29
CG-826E-012X6C	1 1/4	4	0	172	898.23
CG-826E-015X6C	1-1/2	4	0	172	674.01
CG-826E-020X6C	2	2	0	172	854.06
CG-826E-025X6C	2-1/2	1	0	172	1048.43
CG-826E-030X6C	3	1	0	172	1177.39

Part Number	Size	Std Pk	Mstr Ctn	Prod Code	MSRP
-------------	------	--------	----------	-----------	------

Fabricated Expansion Joints - CPVC - MARINE (continued)

6" Travel with EPDM O-rings

CG-826E-040X6C	4	1	0	172	1736.49
CG-826E-060X6C	6	1	0	172	1866.66
CG-826E-080X6C	8	1	0	172	3541.01
CG-826E-100X6C	10	1	0	172	4527.34
CG-826E-120X6C	12	1	0	172	6244.58



Fabricated Expansion Joints - CPVC - MARINE

12" Travel with EPDM O-rings

1/2" - 2" 235 psi @ 73°F (23°C)
 2-1/2" - 12" 150 psi @ 73°F (23°C)

CG-826E-005X12C	1/2	10	0	172	507.01
CG-826E-007X12C	3/4	6	0	172	581.43
CG-826E-010X12C	1	5	0	172	620.23
CG-826E-012X12C	1-1/4	4	0	172	983.21
CG-826E-015X12C	1-1/2	4	0	172	778.54
CG-826E-020X12C	2	2	0	172	993.74
CG-826E-025X12C	2-1/2	1	0	172	1504.44
CG-826E-030X12C	3	1	0	172	1209.03
CG-826E-040X12C	4	1	0	172	2002.78
CG-826E-060X12C	6	1	0	172	2206.33
CG-826E-080X12C	8	1	0	172	4230.54
CG-826E-100X12C	10	1	0	172	4956.26
CG-826E-120X12C	12	1	0	172	6457.94



Fabricated Expansion Joints - CPVC - MARINE

6" Travel with FKM O-rings

1/2" - 2" 235 psi @ 73°F (23°C)
 2-1/2" - 12" 150 psi @ 73°F (23°C)

CG-826-005X6C	1/2	10	0	173	536.08
CG-826-007X6C	3/4	6	0	173	586.61
CG-826-010X6C	1	5	0	173	634.06
CG-826-012X6C	1-1/4	4	0	173	665.99
CG-826-015X6C	1-1/2	4	0	173	725.84
CG-826-020X6C	2	2	0	173	919.74
CG-826-025X6C	2-1/2	1	0	173	1091.41
CG-826-030X6C	3	1	0	173	1267.91
CG-826-040X6C	4	1	0	173	1870.00
CG-826-060X6C	6	1	0	173	2010.20
CG-826-080X6C	8	1	0	173	3813.28
CG-826-100X6C	10	1	0	173	4868.10
CG-826-120X6C	12	1	0	173	6457.94



Marine & Offshore Products

**Schedule 80 CPVC Fittings - For use with ABS & USCG Approved Pipe & EverTUFF® CPVC
Schedule 40 & 80 Marine Pressure Pipe & Fittings**

Schedule 80 CPVC Fittings - For use with ABS & USCG Approved Pipe

Part Number	Size	Std Pk	Mstr Ctn	Prod Code	MSRP
-------------	------	--------	----------	-----------	------



Fabricated Expansion Joints - CPVC - MARINE

12" Travel with FKM O-rings

1/2" - 2" 235 psi @ 73°F (23°C)
2-1/2" - 12" 150 psi @ 73°F (23°C)

CG-826-005X12C	1/2	10	0	173	545.99
CG-826-007X12C	3/4	6	0	173	626.11
CG-826-010X12C	1	5	0	173	667.93
CG-826-012X12C	1-1/4	4	0	173	747.59
CG-826-015X12C	1-1/2	4	0	173	838.40
CG-826-020X12C	2	2	0	173	1070.16
CG-826-025X12C	2-1/2	1	0	173	1620.10
CG-826-030X12C	3	1	0	173	1302.00
CG-826-040X12C	4	1	0	173	2156.76
CG-826-060X12C	6	1	0	173	2375.96
CG-826-080X12C	8	1	0	173	4548.99
CG-826-100X12C	10	1	0	173	5329.30
CG-826-120X12C	12	1	0	173	7624.66

GripLoc™ Coupling - MARINE

**WARNING: DO NOT INSERT FINGERS
EPDM Gasket
Pressure Rated to 235 psi @ 73°F**



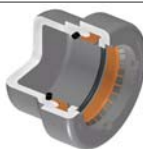
Uses No Solvent Cement.

CG-GL429-005C	1/2	1	40	172	21.10
CG-GL429-007C	3/4	1	36	172	26.04
CG-GL429-010C	1	1	20	172	27.96
CG-GL429-012C	1-1/4	1	15	172	29.60
CG-GL429-015C	1-1/2	1	15	172	29.60
CG-GL429-020C	2	1	10	172	32.90

Gripper is 410 Stainless Steel

GripLoc™ Cap - MARINE

**WARNING: DO NOT INSERT FINGERS
EPDM Gasket
Pressure Rated to 235 psi @ 73°F**



Uses No Solvent Cement.

CG-GL447-005C	1/2	25	150	172	18.43
CG-GL447-007C	3/4	1	50	172	23.71
CG-GL447-010C	1	1	50	172	25.96
CG-GL447-012C	1-1/4	1	25	172	35.60
CG-GL447-015C	1-1/2	1	25	172	41.40
CG-GL447-020C	2	1	25	172	47.54

Gripper is 410 Stainless Steel

Valves - For use with ABS & USCG Approved Piping Systems

Part Number	Size	Std Pk	Mstr Ctn	Prod Code	MSRP
-------------	------	--------	----------	-----------	------

True Union 2000 Industrial Ball Valves - EPDM - MARINE

Socket



CG-1829-005C	1/2	1	18	179	90.90
CG-1829-007C	3/4	1	18	179	114.48
CG-1829-010C	1	1	12	179	136.29
CG-1829-012C	1-1/4	1	8	179	216.66
CG-1829-015C	1-1/2	1	8	179	228.83
CG-1829-020C	2	1	4	179	306.03
CG-1822-025C	2-1/2	1	0	179	686.14
CG-1822-030C	3	1	0	179	802.25
CG-1822-040C	4	1	0	179	1453.73
CG-1822-060C	6	1	0	179	3094.75
CG-1822-080C	8	1	0	179	4116.05

True Union 2000 Industrial Ball Valves - FKM - MARINE

Socket



CG-1839-005C	1/2	1	18	179	101.01
CG-1839-007C	3/4	1	18	179	127.23
CG-1839-010C	1	1	12	179	151.43
CG-1839-012C	1-1/4	1	8	179	240.80
CG-1839-015C	1-1/2	1	8	179	254.25
CG-1839-020C	2	1	4	179	351.80
CG-1832-025C	2-1/2	1	0	179	762.33
CG-1832-030C	3	1	0	179	891.46
CG-1832-040C	4	1	0	179	1615.23
CG-1832-060C	6	1	0	179	3438.39
CG-1832-080C	8	1	0	179	4573.08

True Union 2000 Standard Ball Valves - EPDM - MARINE

Socket



CG-3629-005C	1/2	1	18	179	72.69
CG-3629-007C	3/4	1	18	179	91.59
CG-3629-010C	1	1	12	179	109.04
CG-3629-012C	1-1/4	1	8	179	173.35
CG-3629-015C	1-1/2	1	8	179	183.05
CG-3629-020C	2	1	4	179	244.84
CG-3622-025C	2-1/2	1	0	179	548.91
CG-3622-030C	3	1	0	179	641.81
CG-3622-040C	4	1	0	179	1162.96

True Union 2000 Standard Ball Valves - FKM - MARINE

Socket



CG-3639-005C	1/2	1	18	179	80.83
CG-3639-007C	3/4	1	18	179	101.79

Marine & Offshore Products
EverTUFF® CPVC Schedule 40 & 80 Marine Pressure Pipe & Fittings



Valves - For use with ABS & USCG Approved Piping Systems

Part Number	Size	Std Pk	Mstr Ctn	Prod Code	MSRP
-------------	------	--------	----------	-----------	------

True Union 2000 Standard Ball Valves - FKM - MARINE (continued)

Socket

CG-3639-010C	1	1	12	179	121.15
CG-3639-012C	1-1/4	1	8	179	192.68
CG-3639-015C	1-1/2	1	8	179	203.40
CG-3639-020C	2	1	4	179	281.46
CG-3632-025C	2-1/2	1	0	179	548.91
CG-3632-030C	3	1	0	179	641.81
CG-3632-040C	4	1	0	179	1162.96



True Union 2000 Vertical 3-Way Ball Valves, L-Port, EPDM - MARINE

Socket

CG-4722L1-005C	1/2	1	12	179	217.36
CG-4722L1-007C	3/4	1	8	179	255.05
CG-4722L1-010C	1	1	8	179	309.99
CG-4722L1-012C	1-1/4	1	8	179	375.00
CG-4722L1-015C	1-1/2	1	8	179	433.51
CG-4722L1-020C	2	1	4	179	531.91
CG-4722L1-025C	2-1/2	1	0	179	1870.69
CG-4722L1-030C	3	1	0	179	1909.04
CG-4722L1-040C	4	1	0	179	3299.90

USCG Application Only

True Union 2000 Vertical 3-Way Ball Valves, L-Port, FKM - MARINE

Socket

CG-4732L1-005C	1/2	1	12	179	235.35
CG-4732L1-007C	3/4	1	8	179	277.84
CG-4732L1-010C	1	1	8	179	345.25
CG-4732L1-015C	1-1/2	1	8	179	475.28
CG-4732L1-012C	1-1/4	1	8	179	441.93
CG-4732L1-020C	2	1	4	179	617.54
CG-4732L1-025C	2-1/2	1	0	179	1891.76
CG-4732L1-030C	3	1	0	179	1925.85
CG-4732L1-040C	4	1	0	179	3332.03

USCG Application Only

True Union 2000 Horizontal 3-Way Diverter Ball Valves, EPDM, T-Port - MARINE

Socket

CG-5022T1-005C	1/2	1	12	179	218.59
CG-5022T1-007C	3/4	1	8	179	260.55
CG-5022T1-010C	1	1	8	179	315.96
CG-5022T1-012C	1-1/4	1	8	179	366.14
CG-5022T1-015C	1-1/2	1	8	179	428.28
CG-5022T1-020C	2	1	0	179	525.43



Part Number	Size	Std Pk	Mstr Ctn	Prod Code	MSRP
-------------	------	--------	----------	-----------	------

True Union 2000 Horizontal 3-Way Diverter Ball Valves, EPDM, T-Port - MARINE (continued)

Socket

CG-5022T1-025C	2-1/2	1	0	179	1771.09
CG-5022T1-030C	3	1	0	179	1807.09
CG-5022T1-040C	4	1	0	179	3272.78

USCG Application Only

True Union 2000 Horizontal 3-Way Diverter Ball Valves, FKM, T-Port - MARINE



Socket

CG-5032T1-005C	1/2	1	12	179	236.81
CG-5032T1-007C	3/4	1	8	179	280.46
CG-5032T1-010C	1	1	8	179	348.14
CG-5032T1-012C	1-1/4	1	8	179	410.50
CG-5032T1-015C	1-1/2	1	8	179	468.75
CG-5032T1-020C	2	1	0	179	612.35
CG-5032T1-025C	2-1/2	1	0	179	1883.15
CG-5032T1-030C	3	1	0	179	1912.65
CG-5032T1-040C	4	1	0	179	3309.73

USCG Application Only

True Union 2000 Industrial Ball Check Valves - EPDM - MARINE



Socket

CG-4529-005C	1/2	1	18	179	115.39
CG-4529-007C	3/4	1	18	179	138.10
CG-4529-010C	1	1	18	179	162.95
CG-4529-012C	1-1/4	1	12	179	280.65
CG-4529-015C	1-1/2	1	8	179	280.65
CG-4529-020C	2	1	8	179	374.85
CG-4522-025C	2-1/2	1	0	179	785.51
CG-4522-030C	3	1	0	179	1043.59
CG-4522-040C	4	1	0	179	1723.74
CG-4522-060C	6	1	0	179	3558.85
CG-4522-080C	8	1	0	179	4186.91

True Union 2000 Industrial Ball Check Valves - FKM - MARINE



Socket

CG-4539-005C	1/2	1	18	179	128.45
CG-4539-007C	3/4	1	18	179	153.48
CG-4539-010C	1	1	18	179	181.04
CG-4539-012C	1-1/4	1	12	179	311.55
CG-4539-015C	1-1/2	1	8	179	311.55
CG-4539-020C	2	1	8	179	417.68
CG-4532-025C	2-1/2	1	0	179	872.75
CG-4532-030C	3	1	0	179	1136.65
CG-4532-040C	4	1	0	179	1916.48
CG-4532-060C	6	1	0	179	3953.78
CG-4532-080C	8	1	0	179	5270.24



Marine & Offshore Products
EverTUFF® CPVC Schedule 40 & 80 Marine Pressure Pipe & Fittings & MARINE Solvent Cement & Primer -
For Use with ABS & USCG Approved Schedule 40 & 80 Piping Systems

Valves - For use with ABS & USCG Approved Piping Systems

Part Number	Size	Std Pk	Mstr Ctn	Prod Code	MSRP
-------------	------	--------	----------	-----------	------

Compact 2000 Ball Valves - EPDM - MARINE

Socket

CG-6622-005C	1/2	10	120	179	34.53
CG-6622-007C	3/4	10	80	179	45.54
CG-6622-010C	1	10	0	179	56.91
CG-6622-012C	1-1/4	6	0	179	93.15
CG-6622-015C	1-1/2	5	0	179	115.21
CG-6622-020C	2	8	0	179	150.94

USCG Application Only

Compact 2000 Ball Valves - FKM - MARINE

Socket

CG-6632-005C	1/2	10	120	179	38.43
CG-6632-007C	3/4	10	80	179	51.18
CG-6632-010C	1	10	0	179	64.00
CG-6632-012C	1-1/4	6	0	179	115.11
CG-6632-015C	1-1/2	5	0	179	128.00
CG-6632-020C	2	8	0	179	169.56

USCG Application Only

Butterfly Valve, Standard - EPDM - MARINE

Lever Handle

10" & 12" Valve Gear Operated Only

CG-722311-015C	1-1/2	1	0	179	519.26
CG-722311-020C	2	1	0	179	553.44
CG-722311-025C	2-1/2	1	0	179	587.69
CG-722311-030C	3	1	0	179	640.51
CG-722311-040C	4	1	0	179	740.04
CG-722311-060C	6	1	0	179	1094.48
CG-722311-080C	8	1	0	179	1859.31
CG-722321-100C	10	1	0	179	3631.59
CG-722321-120C	12	1	0	179	5130.24

Butterfly Valves, Standard - FKM - MARINE

Lever Handle

10" & 12" are Gear Operator Only

CG-723311-015C	1-1/2	1	0	179	1050.95
CG-723311-020C	2	1	0	179	1085.15
CG-723311-030C	3	1	0	179	1262.34
CG-723311-040C	4	1	0	179	1579.49
CG-723311-060C	6	1	0	179	2524.75
CG-723311-080C	8	1	0	179	4272.14

Part Number	Size	Std Pk	Mstr Ctn	Prod Code	MSRP
-------------	------	--------	----------	-----------	------

Butterfly Valves, Standard - FKM - MARINE (continued)

Lever Handle

CG-723321-100C	10	1	0	179	9277.96
CG-723321-120C	12	1	0	179	12060.74

Wafer Butterfly Valves -EPDM - MARINE

Lever Handle

10" & 12" :Have Gear Operators Only

CG-752311-020C	2	1	0	179	553.44
CG-752311-025C	2-1/2	1	0	179	587.69
CG-752311-030C	3	1	0	179	640.51
CG-752311-040C	4	1	0	179	740.04
CG-752311-060C	6	1	0	179	1094.48
CG-752311-080C	8	1	0	179	1859.31
CG-752321-100C	10	1	0	179	3631.59
CG-752321-120C	12	1	0	179	5130.24

Wafer Butterfly Valves -FKM - MARINE

Lever Handle

10" & 12" Gerr Operator Only

CG-753311-020C	2	1	0	179	1085.15
CG-753311-025C	2-1/2	1	0	179	1178.43
CG-753311-030C	3	1	0	179	1262.34
CG-753311-040C	4	1	0	179	1579.49
CG-753311-060C	6	1	0	179	2524.75
CG-753311-080C	8	1	0	179	4272.14
CG-753321-100C	10	1	0	179	9277.96
CG-753321-120C	12	1	0	179	12060.74

MARINE Solvent Cement & Primer - For Use with ABS & USCG Approved Schedule 40 & 80 Piping Systems

Marine-24 Solvent Cement - Gray

Requires primer

CG-MARINE24-030	Quart	12	0	178	60.64
CG-MARINE24-040	Gallon	6	0	178	209.39

PRIMER-70 Purple Industrial Strength Primer - MARINE

PRIM70P-030	Quart	12	0	709	36.66
PRIM70P-040	Gallon	6	0	709	120.46

MARINE Solvent Cement & Primer - For Use with ABS & USCG Approved Schedul 40 & 80 Piping Systems



MARINE Solvent Cement & Primer - For Use with ABS & USCG Approved Schedul 40 & 80 Piping Systems

Part Number	Size	Std Pk	Mstr Ctn	Prod Code	MSRP
-------------	------	--------	----------	-----------	------



PRIMER-70 Clear Industrial Strength Primer - MARINE

PRIM70C-030	Quart	12	0	709	36.66
PRIM70C-040	Gallon	6	0	709	120.46