



Marine & Offshore Products

EverTUFF® CPVC Schedule 40 & 80 Marine Pressure Pipe & Fittings

EverTUFF® CPVC Schedule 40 & 80 Marine Pressure Pipe & Fittings



PRODUCT

Contact Spears® for any Information not found.



Schedule 40 CPVC Pipe - ABS & USCG Approved

Part Number	Size	Std Pk	Mstr Ctn	Prod Code	MSRP
-------------	------	--------	----------	-----------	------

Pipe - CPVC Schedule 40 Plain End

10' Lengths, Price Per Foot



CG-PD400-005C10	1/2	10	0	175	2.61
CG-PD400-007C10	3/4	10	0	175	3.49
CG-PD400-010C10	1	10	0	175	5.09
CG-PD400-012C10	1-1/4	10	0	175	6.90
CG-PD400-015C10	1-1/2	10	0	175	8.26
CG-PD400-020C10	2	10	0	175	11.08
CG-PD400-025C10	2-1/2	10	0	175	17.51
CG-PD400-030C10	3	10	0	175	22.86
CG-PD400-040C10	4	10	0	175	32.58
CG-PD400-060C10	6	10	0	175	60.10
CG-PD400-080C10	8	10	0	175	97.90
CG-PD400-100C10	10	10	0	175	167.54
CG-PD400-120C10	12	10	0	175	221.15

Pipe - CPVC Schedule 40 Plain End - MARINE

20' Lengths, Price Per Foot



CG-PD-400-005C	1/2	20	0	175	2.61
CG-PD-400-007C	3/4	20	0	175	3.49
CG-PD-400-010C	1	20	0	175	5.09
CG-PD-400-012C	1-1/4	20	0	175	6.90
CG-PD-400-015C	1-1/2	20	0	175	8.26
CG-PD-400-020C	2	20	0	175	11.08
CG-PD-400-025C	2-1/2	20	0	175	17.51
CG-PD-400-030C	3	20	0	175	22.86
CG-PD-400-040C	4	20	0	175	32.58
CG-PD-400-060C	6	20	0	175	60.10
CG-PD-400-080C	8	20	0	175	97.90
CG-PD-400-100C	10	20	0	175	167.54
CG-PD-400-120C	12	20	0	175	221.15

Schedule 80 CPVC Pipe - ABS & USCG Approved

Pipe - CPVC Schedule 80 Plain End - MARINE

10' Lengths, Price Per Foot



CG-PD800-005C10	1/2	10	0	175	3.06
CG-PD800-007C10	3/4	10	0	175	4.18
CG-PD800-010C10	1	10	0	175	6.15
CG-PD800-012C10	1-1/4	10	0	175	8.46
CG-PD800-015C10	1-1/2	10	0	175	10.26
CG-PD800-020C10	2	10	0	175	14.23
CG-PD800-025C10	2-1/2	10	0	175	21.69

Part Number	Size	Std Pk	Mstr Ctn	Prod Code	MSRP
-------------	------	--------	----------	-----------	------

Pipe - CPVC Schedule 80 Plain End - MARINE (continued)

10' Lengths, Price Per Foot

CG-PD800-030C10	3	10	0	175	29.06
CG-PD800-040C10	4	10	0	175	42.49
CG-PD800-060C10	6	10	0	175	82.70
CG-PD800-080C10	8	10	0	175	137.15
CG-PD800-100C10	10	10	0	175	248.74
CG-PD800-120C10	12	10	0	175	341.93

Pipe - CPVC Schedule 80 Plain End - MARINE

20' Lengths, Price Per Foot



CG-PD-800-005C	1/2	20	0	175	3.06
CG-PD-800-007C	3/4	20	0	175	4.18
CG-PD-800-010C	1	20	0	175	6.15
CG-PD-800-012C	1-1/4	20	0	175	8.46
CG-PD-800-015C	1-1/2	20	0	175	10.26
CG-PD-800-020C	2	20	0	175	14.23
CG-PD-800-025C	2-1/2	20	0	175	21.69
CG-PD-800-030C	3	20	0	175	29.06
CG-PD-800-040C	4	20	0	175	42.49
CG-PD-800-060C	6	20	0	175	82.70
CG-PD-800-080C	8	20	0	175	137.15
CG-PD-800-100C	10	20	0	175	248.74
CG-PD-800-120C	12	20	0	175	341.93

Schedule 80 CPVC Fittings - For use with ABS & USCG Approved Pipe

Tee - MARINE



Socket x Socket x Socket

CG-801-005C	1/2	25	200	172	19.61
CG-801-007C	3/4	15	120	172	19.96
CG-801-010C	1	25	0	172	24.46
CG-801-012C	1-1/4	10	0	172	51.59
CG-801-015C	1-1/2	10	0	172	59.10
CG-801-020C	2	10	0	172	65.78
CG-801-025C	2-1/2	10	0	172	167.46
CG-801-030C	3	5	0	172	167.46
CG-801-040C	4	5	0	172	222.86
CG-801-060C	6	2	0	172	579.98
CG-801-080C	8	2	0	172	1661.33
CG-801-100C	10	1	0	181	3286.61
CG-801-120C	12	1	0	181	5079.39

Tee - Reducing - MARINE



Socket x Socket x Socket

CG-801-101C	3/4X1/2	15	120	172	43.75
CG-801-130C	1X1/2	15	0	172	50.44



Schedule 80 CPVC Fittings - For use with ABS & USCG Approved Pipe

Part Number	Size	Std Pk	Mstr Ctn	Prod Code	MSRP
-------------	------	--------	----------	-----------	------

Tee - Reducing - MARINE (continued)

Socket x Socket x Socket

CG-801-131C	1X3/4	15	0	172	50.44
CG-801-157C	1-1/4X1X3/4	12	0	172	95.85
CG-801-158C	1-1/4X1X1	15	0	172	62.55
CG-801-159C	1-1/4X1X1-1/4	15	0	172	62.55
CG-801-166C	1-1/4X1/2	10	0	172	115.64
CG-801-167C	1-1/4X3/4	12	0	172	98.69
CG-801-168C	1-1/4X1	15	0	172	98.69
CG-801-202C	1-1/2X1-1/4X1	10	0	172	98.69
CG-801-209C	1-1/2X1/2	10	0	172	103.08
CG-801-210C	1-1/2X3/4	15	0	172	103.08
CG-801-211C	1-1/2X1	10	0	172	103.08
CG-801-212C	1-1/2X1-1/4	10	0	172	103.08
CG-801-247C	2X1/2	10	0	172	122.79
CG-801-248C	2X3/4	10	0	172	122.79
CG-801-249C	2X1	10	0	172	122.79
CG-801-250C	2X1-1/4	10	0	172	170.11
CG-801-251C	2X1-1/2	10	0	172	122.79
CG-801-254C	2X2X4	5	0	172	475.76
CG-801-287C	2-1/2X1/2	10	0	172	141.00
CG-801-288C	2-1/2X3/4	10	0	172	141.00
CG-801-289C	2-1/2X1	10	0	172	141.00
CG-801-290C	2-1/2X1-1/4	10	0	172	141.00
CG-801-291C	2-1/2X1-1/2	10	0	172	141.00
CG-801-292C	2-1/2X2	10	0	172	145.95
CG-801-333C	3X1/2	5	0	172	310.35
CG-801-334C	3X3/4	5	0	172	310.35
CG-801-335C	3X1	5	0	172	250.53
CG-801-336C	3X1-1/4	5	0	172	300.49
CG-801-337C	3X1-1/2	5	0	172	250.53
CG-801-338C	3X2	5	0	172	250.53
CG-801-339C	3X2-1/2	6	0	172	250.53
CG-801-415C	4X1/2	5	0	172	381.00
CG-801-416C	4X3/4	5	0	172	381.00
CG-801-417C	4X1	5	0	172	381.00
CG-801-418C	4X1-1/4	5	0	172	381.00
CG-801-419C	4X1-1/2	5	0	172	381.00
CG-801-420C	4X2	5	0	172	316.65
CG-801-421C	4X2-1/2	5	0	172	426.09
CG-801-422C	4X3	5	0	172	316.65
CG-801-426C	4X6	4	0	172	1097.68
CG-801-524C	6X3/4	5	0	172	1089.15
CG-801-525C	6X1	6	0	172	1089.15
CG-801-526C	6X1-1/4	4	0	172	1089.15
CG-801-527C	6X1-1/2	4	0	172	1089.15
CG-801-528C	6X2	6	0	172	1011.94
CG-801-529C	6X2-1/2	4	0	172	1117.18
CG-801-530C	6X3	5	0	172	1011.94
CG-801-532C	6X4	5	0	172	894.30
CG-801-578C	8X2	2	0	172	1890.64
CG-801-580C	8X3	2	0	172	1890.64

Part Number	Size	Std Pk	Mstr Ctn	Prod Code	MSRP
-------------	------	--------	----------	-----------	------

Tee - Reducing - MARINE (continued)

Socket x Socket x Socket

CG-801-582C	8X4	2	0	172	1890.64
CG-801-585C	8X6	2	0	172	1641.68
CG-801-621C	10X2	1	0	181	3309.64
CG-801-623C	10X3	1	0	181	3140.80
CG-801-624C	10X4	1	0	181	3140.80
CG-801-626C	10X6	1	0	181	2892.25
CG-801-628C	10X8	1	0	181	4731.68
CG-801-664C	12X4	1	0	181	5697.18
CG-801-666C	12X6	1	0	181	5336.26
CG-801-668C	12X8	1	0	181	4519.23
CG-801-670C	12X10	1	0	181	6896.44

Tee- Special Reinforced - MARINE



Socket x Socket x SR Fipt - Stainless Steel Collar

CG-802-005CSR	1/2	50	0	180	27.25
CG-802-007CSR	3/4	15	120	180	39.81
CG-802-010CSR	1	15	0	180	50.09
CG-802-012CSR	1-1/4	15	0	180	58.11
CG-802-015CSR	1-1/2	10	0	180	58.11
CG-802-020CSR	2	10	0	180	95.00
CG-802-030CSR	3	5	0	180	136.81
CG-802-040CSR	4	5	0	180	257.74

Tee - Special Reinforced Reducing - MARINE



Socket x Socket x SR Fipt - Stainless Steel Collar

CG-802-101CSR	3/4X1/2	50	0	180	36.41
CG-802-130CSR	1X1/2	50	0	180	22.25
CG-802-131CSR	1X3/4	15	0	180	56.24
CG-802-166CSR	1-1/4X1/2	15	0	180	59.24
CG-802-168CSR	1-1/4X1	10	0	180	60.45
CG-802-211CSR	1-1/2X1	10	0	180	70.98
CG-802-212CSR	1-1/2X1-1/4	10	0	180	70.98
CG-802-247CSR	2X1/2	10	0	180	110.71
CG-802-248CSR	2X3/4	10	0	180	122.99
CG-802-287CSR	2-1/2X1/2	10	0	180	84.58

90° Ell - MARINE



Socket x Socket

CG-806-005C	1/2	20	240	172	8.36
CG-806-007C	3/4	20	160	172	10.69
CG-806-010C	1	25	0	172	16.95
CG-806-012C	1-1/4	10	0	172	36.68
CG-806-015C	1-1/2	10	0	172	40.91
CG-806-020C	2	25	0	172	49.39
CG-806-025C	2-1/2	5	0	172	113.73
CG-806-030C	3	6	0	172	128.76
CG-806-040C	4	5	0	172	231.91

Schedule 80 CPVC Fittings - For use with ABS & USCG Approved Pipe



Schedule 80 CPVC Fittings - For use with ABS & USCG Approved Pipe

Part Number	Size	Std Pk	Mstr Ctn	Prod Code	MSRP
-------------	------	--------	----------	-----------	------

90° EII - MARINE (continued)

Socket x Socket

CG-806-060C	6	4	0	172	466.01
CG-806-080C	8	2	0	172	1140.39
CG-806-100C	10	1	0	181	3047.55
CG-806-120C	12	1	0	181	4123.33

90° EII - Sweep - MARINE

Socket x Socket

CG-806-005SC	1/2	25	150	172	16.46
CG-806-007SC	3/4	25	100	172	21.23
CG-806-010SC	1	20	0	172	34.09
CG-806-012SC	1-1/4	25	0	172	45.04
CG-806-015SC	1-1/2	25	0	172	48.39
CG-806-020SC	2	25	0	172	58.61

90° EII - Long Sweep - MARINE

Socket x Socket

CG-806-005LSCF	1/2	25	0	182	75.85
CG-806-007LSCF	3/4	25	0	182	84.98
CG-806-010LSCF	1	25	0	182	96.08
CG-806-012LSCF	1 1/4	25	0	182	100.68
CG-806-015LSCF	1 1/2	25	0	182	112.40
CG-806-020LSCF	2	1	10	182	157.68
CG-806-025LSCF	2-1/2	1	7	182	206.74
CG-806-030LSCF	3	1	5	182	218.75
CG-806-040LSCF	4	1	4	182	270.60
CG-806-060LSCF	6	1	2	182	399.06
CG-806-080LSCF	8	1	0	182	1026.48
CG-806-100LSCF	10	1	0	183	1564.14

90° EII - Special Reinforced - MARINE

Socket x SR Fipt - Stainless Steel Collar

CG-807-005CSR	1/2	20	240	180	13.23
CG-807-007CSR	3/4	75	0	180	15.54
CG-807-010CSR	1	50	0	180	18.71
CG-807-012CSR	1-1/4	25	0	180	38.64
CG-807-015CSR	1-1/2	10	0	180	46.44
CG-807-020CSR	2	10	0	180	58.10
CG-807-030CSR	3	5	0	180	84.56
CG-807-040CSR	4	5	0	180	156.15

Part Number	Size	Std Pk	Mstr Ctn	Prod Code	MSRP
-------------	------	--------	----------	-----------	------

90° Street EII - MARINE

Spigot x Socket

CG-809-005C	1/2	50	200	172	10.50
CG-809-007C	3/4	50	0	172	13.35
CG-809-010C	1	50	0	172	21.23
CG-809-012C	1-1/4	25	0	172	45.86
CG-809-015C	1-1/2	10	0	172	51.20
CG-809-020C	2	25	0	172	61.80
CG-809-025C	2-1/2	5	0	172	124.74
CG-809-030C	3	5	0	172	171.73
CG-809-040C	4	4	0	172	309.23
CG-809-060C	6	2	0	172	621.45
CG-809-080C	8	2	0	172	1520.53
CG-809-100C	10	1	0	181	4062.95
CG-809-120C	12	1	0	181	5495.64

11-1/4° EII - MARINE

Socket x Socket

CG-811-005CF	1/2	1	52	182	44.98
CG-811-007CF	3/4	1	20	182	46.35
CG-811-010CF	1	1	50	182	64.11
CG-811-012CF	1-1/4	1	26	182	68.39
CG-811-015C	1-1/2	25	0	172	51.14
CG-811-020C	2	10	0	172	62.55
CG-811-025CF	2-1/2	1	25	182	154.85
CG-811-030C	3	10	0	172	164.23
CG-811-040C	4	4	0	172	225.44
CG-811-060CF	6	1	5	182	432.93
CG-811-080CF	8	1	3	182	822.68
CG-811-100CF	10	1	2	183	1365.60
CG-811-120CF	12	1	2	183	1798.64

45° EII - MARINE

Socket x Socket

CG-817-005C	1/2	20	120	172	10.24
CG-817-007C	3/4	20	120	172	14.78
CG-817-010C	1	15	120	172	23.50
CG-817-012C	1-1/4	10	80	172	46.16
CG-817-015C	1-1/2	10	0	172	47.40
CG-817-020C	2	10	0	172	53.16
CG-817-025C	2-1/2	5	0	172	108.64
CG-817-030C	3	5	0	172	139.58
CG-817-040C	4	5	0	172	191.61
CG-817-060C	6	4	0	172	590.30
CG-817-080C	8	2	0	172	1228.15
CG-817-100C	10	1	0	181	2330.55
CG-817-120C	12	1	0	181	4100.21



Schedule 80 CPVC Fittings - For use with ABS & USCG Approved Pipe

Schedule 80 CPVC Fittings - For use with ABS & USCG Approved Pipe

Part Number	Size	Std Pk	Mstr Ctn	Prod Code	MSRP
-------------	------	--------	----------	-----------	------

15° EII - MARINE

Socket x Socket



CG-818-005CF	1/2	1	20	182	44.98
CG-818-007CF	3/4	1	23	182	46.35
CG-818-010CF	1	1	20	182	64.11
CG-818-012CF	1-1/4	1	15	182	68.39
CG-818-015CF	1-1/2	1	25	182	73.73
CG-818-020CF	2	1	25	182	138.59
CG-818-025CF	2-1/2	1	18	182	154.85
CG-818-030CF	3	1	35	182	172.73
CG-818-040CF	4	1	18	182	225.55
CG-818-060CF	6	1	8	182	432.93
CG-818-080CF	8	1	3	182	822.68
CG-818-100CF	10	1	2	183	1365.60
CG-818-120CF	12	1	0	183	1798.64

45° Street EII - MARINE

Spigot x Socket



CG-827-005C	1/2	50	400	172	10.24
CG-827-007C	3/4	50	0	172	14.78
CG-827-010C	1	50	0	172	23.50
CG-827-012C	1-1/4	25	0	172	46.16
CG-827-015C	1-1/2	25	0	172	47.33
CG-827-020C	2	10	0	172	53.16
CG-827-025C	2-1/2	12	0	172	117.65
CG-827-030C	3	10	0	172	139.58
CG-827-040C	4	5	0	172	191.61
CG-827-060C	6	4	0	172	694.48
CG-827-080C	8	2	0	172	1444.84
CG-827-100C	10	1	0	181	2741.83
CG-827-120C	12	1	0	181	4823.75

Cross - MARINE

Socket x Socket x Socket x Socket



CG-820-005C	1/2	50	0	172	83.60
CG-820-007C	3/4	50	0	172	87.99
CG-820-010C	1	50	0	172	97.53
CG-820-012C	1-1/4	25	0	174	104.35
CG-820-015C	1-1/2	25	0	172	113.41
CG-820-020C	2	10	0	172	147.10
CG-820-025C	2-1/2	10	0	172	196.11
CG-820-030C	3	5	0	172	249.76
CG-820-040C	4	3	0	172	446.16
CG-820-060CF	6	1	0	182	1172.48

Part Number	Size	Std Pk	Mstr Ctn	Prod Code	MSRP
-------------	------	--------	----------	-----------	------

Cross - MARINE (continued)

Socket x Socket x Socket x Socket

CG-820-080CF	8	1	0	182	2230.20
CG-820-100CF	10	1	0	183	3317.55
CG-820-120CF	12	1	0	183	4713.74

Coupling - MARINE

Socket x Socket



CG-829-005C	1/2	25	150	172	8.84
CG-829-007C	3/4	15	90	172	12.35
CG-829-010C	1	15	90	172	16.64
CG-829-012C	1-1/4	10	60	172	24.93
CG-829-015C	1-1/2	10	40	172	31.35
CG-829-020C	2	20	0	172	36.46
CG-829-025C	2-1/2	10	0	172	81.11
CG-829-030C	3	5	0	172	88.15
CG-829-040C	4	5	0	172	115.51
CG-829-060C	6	4	0	172	272.06
CG-829-080C	8	4	0	172	735.28
CG-829-100C	10	1	0	181	924.90
CG-829-120C	12	1	0	172	1083.28

Coupling - Reducing - MARINE

Socket x Socket



CG-829-101C	3/4X1/2	50	400	172	23.11
CG-829-130C	1X1/2	25	200	172	32.98
CG-829-131C	1X3/4	25	200	172	32.98
CG-829-166C	1-1/4X1/2	25	0	172	75.51
CG-829-167C	1-1/4X3/4	25	0	172	75.51
CG-829-168C	1-1/4X1	25	0	172	75.51
CG-829-209C	1-1/2X1/2	25	0	172	74.91
CG-829-210C	1-1/2X3/4	25	0	172	74.91
CG-829-211C	1-1/2X1	25	0	172	74.91
CG-829-212C	1-1/2X1-1/4	25	0	172	74.91
CG-829-247C	2X1/2	25	0	172	99.05
CG-829-248C	2X3/4	10	80	172	99.05
CG-829-249C	2X1	25	0	172	99.05
CG-829-251C	2X1-1/2	10	40	172	99.05
CG-829-290C	2-1/2X1-1/4	10	0	172	159.93
CG-829-291C	2-1/2X1-1/2	10	0	172	112.79
CG-829-292C	2-1/2X2	10	0	172	112.79
CG-829-335C	3X1	8	0	172	278.96
CG-829-336C	3X1-1/4	6	0	172	287.49
CG-829-337C	3X1-1/2	8	0	172	287.49
CG-829-338C	3X2	10	0	172	227.90
CG-829-339C	3X2-1/2	10	0	172	228.85
CG-829-416C	4X3/4	4	0	172	328.64
CG-829-417C	4X1	4	0	172	328.64
CG-829-419C	4X1-1/2	4	0	172	328.64
CG-829-420C	4X2	6	0	172	271.85
CG-829-421C	4X2-1/2	4	0	172	271.85

Schedule 80 CPVC Fittings - For use with ABS & USCG Approved Pipe



Schedule 80 CPVC Fittings - For use with ABS & USCG Approved Pipe

Part Number	Size	Std Pk	Mstr Ctn	Prod Code	MSRP
-------------	------	--------	----------	-----------	------

Coupling - Reducing - MARINE (continued)

Socket x Socket

CG-829-422C	4X3	4	0	172	271.85
CG-829-528C	6X2	6	0	172	719.20
CG-829-529C	6X2-1/2	4	0	172	847.59
CG-829-530C	6X3	12	0	172	733.91
CG-829-532C	6X4	4	0	172	617.54
CG-829-580CF	8X3	1	6	182	654.03
CG-829-582C	8X4	2	0	172	1120.58
CG-829-585C	8X6	2	0	172	1069.99
CG-829-621CF	10X2	1	0	183	1211.59
CG-829-623CF	10X3	1	2	183	1016.11
CG-829-624CF	10X4	1	2	183	976.68
CG-829-626C	10X6	1	0	181	1663.98
CG-829-628C	10X8	1	0	181	1663.98
CG-829-664CF	12X4	1	2	183	2173.86
CG-829-666CF	12X6	1	0	183	2021.79
CG-829-668C	12X8	1	0	181	1812.98
CG-829-670CF	12X10	1	2	183	825.04

Grooved Coupling Adapter - MARINE

Groove x Socket

CG-833-012C	1-1/4	10	60	172	39.76
CG-833-015C	1-1/2	10	80	172	52.43
CG-833-020C	2	5	40	172	68.15
CG-833-025C	2-1/2	5	0	172	112.08
CG-833-030C	3	5	0	172	138.19
CG-833-040C	4	5	0	172	235.16
CG-833-060C	6	5	0	172	336.39
CG-833-080CF	8	1	4	182	424.26
CG-833-100CF	10	1	0	183	665.84
CG-833-120CF	12	1	0	183	939.06

Female Adapter - Special Reinforced - MARINE

Socket x SR Fipt - Stainless Steel Collar

CG-835-005CSR	1/2	25	150	180	7.78
CG-835-007CSR	3/4	25	150	180	8.40
CG-835-010CSR	1	25	200	180	19.15
CG-835-012CSR	1-1/4	10	60	180	19.65
CG-835-015CSR	1-1/2	10	80	180	22.80
CG-835-020CSR	2	10	0	180	32.40
CG-835-025CSR	2 1/2	5	0	180	75.33
CG-835-030CSR	3	15	0	180	154.78
CG-835-040CSR	4	5	0	180	257.60
CG-835-060CSR	6	6	0	180	402.43

Part Number	Size	Std Pk	Mstr Ctn	Prod Code	MSRP
-------------	------	--------	----------	-----------	------

Female Adapter - Special Reinforced Reducing - MARINE



Socket x SR Fipt - Stainless Steel Collar

CG-835-074CSR	1/2X3/4	50	400	180	8.40
CG-835-101CSR	3/4X1/2	50	400	180	8.40
CG-835-102CSR	3/4X1	50	0	180	19.15
CG-835-130CSR	1X1/2	50	0	180	19.15
CG-835-131CSR	1X3/4	25	200	180	19.15

Female Adapter - Stainless Steel Transition - MARINE



Socket x Fipt With Type 316 Stainless Steel Thread Insert

CG-835-005CSS	1/2	25	150	180	86.05
CG-835-007CSS	3/4	15	90	180	120.15
CG-835-010CSS	1	15	90	180	210.26
CG-835-012CSS	1-1/4	25	0	180	341.73
CG-835-015CSS	1-1/2	10	40	180	445.80
CG-835-020CSS	2	8	32	180	521.73

Female Adapter - Encapsulated Special Reinforced - MARINE



Socket x ESR Fipt

CG-835-005CESR	1/2	25	300	180	11.91
CG-835-007CESR	3/4	25	300	180	12.58
CG-835-010CESR	1	25	200	180	27.71
CG-835-012CESR	1-1/4	10	80	180	28.36
CG-835-015CESR	1-1/2	10	80	180	36.74
CG-835-020CESR	2	10	0	180	57.09

Male Adapter - MARINE



Mipt x Socket

CG-836-005C	1/2	25	150	172	11.41
CG-836-007C	3/4	25	150	172	13.93
CG-836-102C	3/4X1	25	0	172	51.26
CG-836-131C	1X3/4	25	0	172	48.69
CG-836-010C	1	20	240	172	23.46
CG-836-012C	1-1/4	10	60	172	34.58
CG-836-015C	1-1/2	10	120	172	46.74
CG-836-020C	2	10	80	172	63.40
CG-836-025C	2-1/2	10	0	172	172.85
CG-836-030C	3	5	0	172	232.29
CG-836-040C	4	5	0	172	392.69
CG-836-060C	6	5	0	172	562.80
CG-836-080CF	8	1	2	182	509.25
CG-836-100CF	10	1	2	183	943.59
CG-836-120CF	12	1	0	183	1098.09



Schedule 80 CPVC Fittings - For use with ABS & USCG Approved Pipe

Schedule 80 CPVC Fittings - For use with ABS & USCG Approved Pipe

Part Number	Size	Std Pk	Mstr Ctn	Prod Code	MSRP
-------------	------	--------	----------	-----------	------

Male Adapter - Internal Reinforced - MARINE

R Mipt x Socket - Stainless Steel Sleeve



CG-836-005CR	1/2	25	150	180	11.94
CG-836-007CR	3/4	25	300	180	13.68
CG-836-010CR	1	10	120	180	16.23

Male Spigot Adapter - MARINE

Spigot x Mipt



CG-861-005C	1/2	50	300	172	13.91
CG-861-007C	3/4	25	150	172	17.28
CG-861-010C	1	50	0	172	29.30
CG-861-131C	1X3/4	50	200	172	34.24
CG-861-012C	1-1/4	25	200	172	33.24
CG-861-015C	1-1/2	25	0	172	36.69
CG-861-020C	2	25	0	172	42.94

Reducer Bushing Flush Style - MARINE

Spigot x Socket



CG-837-101C	3/4X1/2	50	300	172	9.43
CG-837-130C	1X1/2	50	400	172	14.65
CG-837-131C	1X3/4	50	300	172	14.65
CG-837-166C	1-1/4X1/2	25	300	172	38.86
CG-837-167C	1-1/4X3/4	25	150	172	38.86
CG-837-168C	1-1/4X1	25	150	172	38.86
CG-837-209C	1-1/2X1/2	25	200	172	43.95
CG-837-210C	1-1/2X3/4	25	200	172	43.95
CG-837-211C	1-1/2X1	25	200	172	43.95
CG-837-212C	1-1/2X1-1/4	25	200	172	43.95
CG-837-247C	2X1/2	10	120	172	56.73
CG-837-248C	2X3/4	10	60	172	56.73
CG-837-249C	2X1	10	120	172	56.73
CG-837-250C	2X1-1/4	10	60	172	56.73
CG-837-251C	2X1-1/2	10	60	172	56.73
CG-837-289C	2-1/2X1	10	80	172	97.54
CG-837-290C	2-1/2X1-1/4	10	80	172	69.06
CG-837-291C	2-1/2X1-1/2	10	40	172	69.06
CG-837-292C	2-1/2X2	15	0	172	69.06
CG-837-333C	3X1/2	10	0	172	122.31
CG-837-334C ¹	3X3/4	10	0	172	120.30
CG-837-335C	3X1	10	0	172	105.24
CG-837-336C	3X1-1/4	10	0	172	105.24
CG-837-337C	3X1-1/2	10	0	172	105.24
CG-837-338C	3X2	10	0	172	105.24
CG-837-339C	3X2-1/2	15	0	172	105.24

Part Number	Size	Std Pk	Mstr Ctn	Prod Code	MSRP
-------------	------	--------	----------	-----------	------

Reducer Bushing Flush Style - MARINE (continued)

Spigot x Socket

CG-837-416C ¹	4X3/4	10	0	172	176.60
CG-837-418C ¹	4X1-1/4	6	0	172	189.20
CG-837-419C	4X1-1/2	6	0	172	176.61
CG-837-420C	4X2	6	0	172	116.35
CG-837-421C	4X2-1/2	6	0	172	116.35
CG-837-422C	4X3	6	0	172	116.35
CG-837-525C ¹	6X1	5	0	172	312.64
CG-837-527C ¹	6X1-1/2	5	0	172	323.51
CG-837-528C	6X2	5	0	172	249.64
CG-837-530C	6X3	5	0	172	249.64
CG-837-532C	6X4	5	0	172	247.89
CG-837-578C ¹	8X2	4	0	172	1076.23
CG-837-580C	8X3	4	0	172	1076.23
CG-837-582C	8X4	4	0	172	1076.23
CG-837-585C	8X6	4	0	172	816.06
CG-837-621C ¹	10X2	2	0	181	1792.86
CG-837-624C ¹	10X4	4	0	181	1792.86
CG-837-626C	10X6	3	0	181	1444.35
CG-837-628C	10X8	3	0	181	1444.35
CG-837-664C ¹	12X4	2	0	181	2943.80
CG-837-668C	12X8	2	0	181	1820.98
CG-837-670CF	12X10	2	0	183	1303.86

¹ Sized with Bushing

Female Spigot Adapter - Special Reinforced - MARINE

Spigot x SR Fipt - Stainless Steel Collar



CG-878-005CSR	1/2	50	600	180	12.26
CG-878-007CSR	3/4	25	300	180	8.74
CG-878-010CSR	1	50	0	180	19.66
CG-878-012CSR	1-1/4	25	0	180	20.33
CG-878-015CSR	1-1/2	25	0	180	23.60
CG-878-020CSR	2	15	0	180	42.99
CG-878-030CSR	3	5	0	180	156.73
CG-878-040CSR	4	5	0	180	263.09

Female Spigot Adapter - Stainless Steel Transition - MARINE

Socket x Fipt With Type 316 Stainless Steel Thread Insert



CG-878-005CSS	1/2	25	150	180	85.25
CG-878-007CSS	3/4	25	150	180	109.65
CG-878-010CSS	1	15	90	180	142.31

Reducer Bushing Flush Style - MARINE

Spigot x Fipt



CG-838-101C	3/4X1/2	50	600	172	10.28
CG-838-130C	1X1/2	50	400	172	13.04
CG-838-131C	1X3/4	50	400	172	13.04
CG-838-166C	1-1/4X1/2	25	150	172	42.09

Schedule 80 CPVC Fittings - For use with ABS & USCG Approved Pipe



Schedule 80 CPVC Fittings - For use with ABS & USCG Approved Pipe

Part Number	Size	Std Pk	Mstr Ctn	Prod Code	MSRP
-------------	------	--------	----------	-----------	------

Reducer Bushing Flush Style - MARINE (continued)

Spigot x Fipt

CG-838-167C	1-1/4X3/4	25	300	172	42.09
CG-838-168C	1-1/4X1	25	300	172	42.09
CG-838-207C	1-1/2X1/4	25	200	172	51.84
CG-838-209C	1-1/2X1/2	25	200	172	51.84
CG-838-210C	1-1/2X3/4	25	200	172	51.84
CG-838-211C	1-1/2X1	25	200	172	51.84
CG-838-212C	1-1/2X1-1/4	25	200	172	51.84
CG-838-247C	2X1/2	10	120	172	71.28
CG-838-248C	2X3/4	10	60	172	71.28
CG-838-249C	2X1	10	120	172	71.28
CG-838-250C	2X1-1/4	10	120	172	71.28
CG-838-251C	2X1-1/2	10	120	172	71.28
CG-838-287C	2-1/2X1/2	10	0	172	114.03
CG-838-288C	2-1/2X3/4	10	40	172	114.03
CG-838-289C	2-1/2X1	10	40	172	114.03
CG-838-290C	2-1/2X1-1/4	10	0	172	114.03
CG-838-291C	2-1/2X1-1/2	10	40	172	113.25
CG-838-292C	2-1/2X2	10	40	172	113.25
CG-838-334C	3X3/4	10	0	172	301.73
CG-838-335C	3X1	10	0	172	301.73
CG-838-336C	3X1-1/4	10	0	172	263.95
CG-838-337C	3X1-1/2	10	0	172	263.95
CG-838-338C	3X2	10	0	172	252.45
CG-838-339C	3X2-1/2	10	0	172	254.50
CG-838-420C	4X2	6	0	172	514.43
CG-838-421C	4X2-1/2	6	0	172	514.43
CG-838-422C	4X3	6	0	172	514.43
CG-838-528C	6X2	5	0	172	1037.14
CG-838-530C	6X3	5	0	172	1037.14
CG-838-532C	6X4	5	0	172	1037.14

Reducer Bushing - Special Reinforced - MARINE

Spigot x SR Fipt - Stainless Steel Collar

CG-838-209CSR	1-1/2X1/2	10	120	180	31.10
CG-838-210CSR	1-1/2X3/4	10	120	180	31.10
CG-838-247CSR	2X1/2	10	80	180	42.74
CG-838-248CSR	2X3/4	10	80	180	42.74
CG-838-249CSR	2X1	10	120	180	42.74
CG-838-334CSR	3X3/4	10	0	180	181.00
CG-838-335CSR	3X1	10	0	180	181.00
CG-838-336CSR	3X1-1/4	10	0	180	181.00
CG-838-337CSR	3X1-1/2	10	0	180	181.00
CG-838-528CSR	6X2	5	0	180	622.26
CG-838-530CSR	6X3	5	0	180	622.26
CG-838-532CSR	6X4	5	0	180	659.35



Part Number	Size	Std Pk	Mstr Ctn	Prod Code	MSRP
-------------	------	--------	----------	-----------	------

Cap - MARINE



Socket

CG-847-005C	1/2	25	150	172	13.76
CG-847-007C	3/4	25	300	172	19.61
CG-847-010C	1	15	90	172	34.70
CG-847-012C	1-1/4	10	60	172	37.96
CG-847-015C	1-1/2	10	60	172	37.96
CG-847-020C	2	10	80	172	40.04
CG-847-025C	2-1/2	5	40	172	134.79
CG-847-030C	3	5	0	172	147.74
CG-847-040C	4	5	0	172	150.19
CG-847-060C	6	4	0	172	496.95
CG-847-080C	8	3	0	172	1508.08
CG-847-100CF	10	1	5	183	1259.93
CG-847-120CF	12	1	4	183	1380.85

CAP - MARINE



Fipt

CG-848-005C	1/2	25	150	172	15.29
CG-848-007C	3/4	25	300	172	25.30
CG-848-010C	1	15	90	172	35.44
CG-848-012C	1-1/4	10	60	172	63.19
CG-848-015C	1-1/2	10	120	172	64.74
CG-848-020C	2	10	80	172	93.25
CG-848-025C	2-1/2	5	40	172	215.78
CG-848-030C	3	5	0	172	283.08
CG-848-040C	4	5	0	172	411.21
CG-848-060CF	6	1	4	182	581.78
CG-848-080CF	8	1	0	182	631.28

Cap - Special Reinforced - MARINE

SR Fipt - Stainless Steel Collar

CG-848-005CSR	1/2	50	300	180	8.74
CG-848-007CSR	3/4	25	300	180	15.24
CG-848-030CSR	3	5	0	180	170.08



Plug - MARINE

Spigot

CG-849-005C	1/2	50	300	172	17.53
CG-849-007C	3/4	50	300	172	21.61
CG-849-010C	1	50	200	172	24.40
CG-849-012C	1-1/4	25	100	172	31.10
CG-849-015C	1-1/2	10	120	172	34.14
CG-849-020C	2	10	120	172	45.73
CG-849-025CF ⁺	2-1/2	1	8	182	54.24
CG-849-030CF ⁺	3	1	4	182	124.71





Schedule 80 CPVC Fittings - For use with ABS & USCG Approved Pipe

Schedule 80 CPVC Fittings - For use with ABS & USCG Approved Pipe

Part Number	Size	Std Pk	Mstr Ctn	Prod Code	MSRP
-------------	------	--------	----------	-----------	------

Plug - MARINE (continued)

Spigot

CG-849-040CF ⁴	4	1	4	182	153.90
CG-849-060CF ⁴	6	1	6	182	191.06
CG-849-080CF ⁴	8	1	6	182	513.20
CG-849-100CF ⁴	10	1	2	183	1021.08
CG-849-120CF ⁴	12	1	0	183	1979.00

⁴ Plug fabricated using Cap and pipe spigot.

Plug - MARINE

Mipt



CG-850-005C	1/2	50	500	172	12.44
CG-850-007C	3/4	50	300	172	15.75
CG-850-010C	1	25	175	172	25.91
CG-850-012C	1-1/4	25	150	172	29.45
CG-850-015C	1-1/2	25	150	172	32.46
CG-850-020C	2	10	120	172	44.20
CG-850-025C	2-1/2	5	30	172	75.03
CG-850-030C	3	5	40	172	80.34
CG-850-040C	4	5	0	172	142.56
CG-850-060C	6	6	0	172	200.20
CG-850-080C	8	4	0	172	355.75
CG-850-100CF ⁴	10	1	3	183	1432.61
CG-850-120CF ⁴	12	1	0	183	2185.20

⁴ Plug fabricated using Cap and threaded pipe.

Wye - MARINE

Socket x Socket x Socket



1/2" - 2" - 235 psi Maximum Internal Pressure Rating @ 73°F (23°C)

2-1/2" - 6" - 150 psi Maximum Internal Pressure Rating @ 73°F (23°C)

8" - Larger & All Fabricated Sizes - 100 psi Maximum Internal Pressure Rating @ 73°F (23°C)

CG-875-005C	1/2	25	100	172	22.73
CG-875-007C	3/4	25	0	172	23.48
CG-875-010C	1	20	0	172	39.55
CG-875-012C	1-1/4	20	0	172	59.91
CG-875-015C	1-1/2	20	0	172	64.40
CG-875-020C	2	10	0	172	157.69
CG-875-025C	2-1/2	6	0	172	502.46
CG-875-030C	3	5	0	172	777.53
CG-875-040C	4	4	0	172	822.04
CG-875-060C	6	3	0	172	1125.09
CG-875-080C	8	1	0	172	1921.40

Part Number	Size	Std Pk	Mstr Ctn	Prod Code	MSRP
-------------	------	--------	----------	-----------	------

Wye - Reducing - MARINE

Socket x Socket x Socket



1/2" - 2" - 235 psi Maximum Internal Pressure Rating @ 73°F (23°C)

2-1/2" - 6" - 150 psi Maximum Internal Pressure Rating @ 73°F (23°C)

8" - Larger & All Fabricated Sizes - 100 psi Maximum Internal Pressure Rating @ 73°F (23°C)

CG-875-101C ¹	3/4X1/2	25	0	183	33.56
CG-875-130C ¹	1X1/2	20	0	172	55.30
CG-875-131C ¹	1X3/4	20	0	172	55.30
CG-875-166C ¹	1-1/4X1/2	20	0	172	100.80
CG-875-167C ¹	1-1/4X3/4	20	0	172	100.80
CG-875-168C ¹	1-1/4X1	20	0	172	100.80
CG-875-209C ¹	1-1/2X1/2	20	0	172	110.56
CG-875-210C ¹	1-1/2X3/4	20	0	172	110.56
CG-875-211C ¹	1-1/2X1	20	0	172	110.56
CG-875-212C ¹	1-1/2X1-1/4	20	0	172	110.56
CG-875-247C ¹	2X1/2	10	0	172	218.78
CG-875-248C ¹	2X3/4	10	0	172	218.78
CG-875-249C ¹	2X1	10	0	172	218.78
CG-875-250C ¹	2X1-1/4	10	0	172	218.78
CG-875-251C ¹	2X1-1/2	10	0	172	218.78
CG-875-335C ¹	3X1	5	0	172	899.94
CG-875-336C ¹	3X1-1/4	5	0	172	899.94
CG-875-337C ¹	3X1-1/2	5	0	172	899.94
CG-875-338C ¹	3X2	4	0	172	899.94
CG-875-339C ¹	3X2-1/2	5	0	172	899.94
CG-875-420C	4X2	4	0	172	910.01
CG-875-422C	4X3	4	0	172	910.01
CG-875-528C ¹	6X2	5	0	172	1152.64
CG-875-530C ¹	6X3	5	0	172	1152.41
CG-875-532C	6X4	5	0	172	879.96
CG-875-578C ¹	8X2	2	0	172	3048.08
CG-875-580C ¹	8X3	2	0	172	3048.08
CG-875-582C	8X4	2	0	172	3048.08
CG-875-585C ¹	8X6	1	0	172	2793.34
CG-875-626C	10X6	1	0	181	3148.85
CG-875-628C	10X8	1	0	181	3315.41

¹ Sized with Bushing

Union 2000 - Socket/FKM - MARINE

Socket x Socket with FKM O-ring Seal



235 psi Maximum Internal Pressure Rating @ 73°F (23°C)

CG-8057-005C	1/2	20	120	172	37.93
CG-8057-007C	3/4	20	80	172	39.61
CG-8057-010C	1	15	90	172	47.55
CG-8057-012C	1-1/4	10	0	172	96.21
CG-8057-015C	1-1/2	10	0	172	97.96
CG-8057-020C	2	5	0	172	162.39
CG-8057-025C	2-1/2	5	0	172	266.31

Schedule 80 CPVC Fittings - For use with ABS & USCG Approved Pipe



Schedule 80 CPVC Fittings - For use with ABS & USCG Approved Pipe

Part Number	Size	Std Pk	Mstr Ctn	Prod Code	MSRP
-------------	------	--------	----------	-----------	------

Union 2000 - Socket/FKM - MARINE (continued)

Socket x Socket with FKM O-ring Seal

CG-8057-030C	3	5	0	172	337.04
CG-8057-040C	4	4	0	172	430.59
CG-8057-060C	6	1	0	172	956.89

Union 2000 - Fipt/FKM - MARINE

Fipt x Fipt with FKM O-ring Seal

235 psi Maximum Internal Pressure Rating @ 73°F (23°C)

CG-8058-005C	1/2	20	120	172	40.61
CG-8058-007C	3/4	20	80	172	71.79
CG-8058-010C	1	15	90	172	98.99
CG-8058-012C	1-1/4	10	0	172	188.61
CG-8058-015C	1-1/2	10	0	172	188.61
CG-8058-020C	2	5	0	172	213.20
CG-8058-025C	2-1/2	5	0	172	343.48
CG-8058-030C	3	5	0	172	651.74
CG-8058-040C	4	4	0	172	700.58
CG-8058-060C	6	1	0	172	1556.89

Union 2000 - Socket/EPDM - MARINE

Socket x Socket with EPDM O-ring Seal

235 psi Maximum Internal Pressure Rating @ 73°F (23°C)

CG-8097-005C	1/2	20	120	172	37.80
CG-8097-007C	3/4	20	80	172	39.15
CG-8097-010C	1	15	90	172	46.90
CG-8097-012C	1-1/4	10	0	172	94.98
CG-8097-015C	1-1/2	10	0	172	96.78
CG-8097-020C	2	5	0	172	160.39
CG-8097-025C	2-1/2	5	0	172	265.61
CG-8097-030C	3	5	0	172	332.76
CG-8097-040C	4	4	0	172	425.71
CG-8097-060C	6	1	0	172	946.01

Union 2000 - Fipt/EPDM - MARINE

Fipt x Fipt with EPDM O-ring Seal

Fipt x Fipt with EPDM O-ring Seal

CG-8098-005C	1/2	20	120	172	40.10
CG-8098-007C	3/4	20	80	172	70.90
CG-8098-010C	1	15	90	172	97.78
CG-8098-012C	1-1/4	10	0	172	186.43
CG-8098-015C	1-1/2	10	0	172	186.43
CG-8098-020C	2	5	0	172	210.60
CG-8098-025C	2-1/2	5	0	172	296.70
CG-8098-030C	3	5	0	172	590.31

Part Number	Size	Std Pk	Mstr Ctn	Prod Code	MSRP
-------------	------	--------	----------	-----------	------

Union 2000 - Fipt/EPDM - MARINE (continued)

Fipt x Fipt with EPDM O-ring Seal

CG-8098-040C	4	4	0	172	687.25
CG-8098-060C	6	1	0	172	1527.19

Union 2000 - Special Reinforced Fipt/FKM - MARINE

SR Fipt x SR Fipt w/FKM O-ring Seal - Stainless Steel Collar

235 psi Maximum Internal Pressure Rating @ 73°F (23°C)

CG-8058-005CSR	1/2	20	120	180	22.93
CG-8058-007CSR	3/4	20	80	180	39.96
CG-8058-010CSR	1	15	90	180	54.93
CG-8058-012CSR	1-1/4	10	0	180	103.51
CG-8058-015CSR	1-1/2	10	0	180	112.96
CG-8058-020CSR	2	5	0	180	119.03
CG-8058-025CSR	2-1/2	5	0	180	206.06
CG-8058-030CSR	3	5	0	180	336.35
CG-8058-040CSR	4	4	0	180	394.05
CG-8058-060CSR	6	1	0	180	887.44

Union 2000 - Special Reinforced Fipt/EPDM - MARINE

SR Fipt x SR Fipt w/EPDM O-ring Seal - Stainless Steel Collar

235 psi Maximum Internal Pressure Rating @ 73°F (23°C)

CG-8098-005CSR	1/2	20	160	180	22.16
CG-8098-007CSR	3/4	20	80	180	39.59
CG-8098-010CSR	1	15	90	180	54.29
CG-8098-012CSR	1-1/4	10	0	180	102.51
CG-8098-015CSR	1-1/2	10	0	180	112.09
CG-8098-020CSR	2	5	0	180	117.85
CG-8098-025CSR	2-1/2	5	0	180	203.68
CG-8098-030CSR	3	5	0	180	331.15
CG-8098-040CSR	4	4	0	180	383.36
CG-8098-060CSR	6	1	0	180	851.93

Tank Adapters, CPVC New Style Standard with Neoprene Gaskets - MARINE

Socket x Socket

150 psi Maximum Internal Pressure Rating @ 73°F (23°C)

CG-8170-005C	1/2	25	0	180	66.94
CG-8170-007C	3/4	25	0	180	79.64
CG-8170-010C	1	25	0	180	89.39
CG-8170-012C	1-1/4	20	0	180	114.00
CG-8170-015C	1-1/2	20	0	180	124.14
CG-8170-020C	2	15	0	180	175.24
CG-8170-025C	2-1/2	4	0	180	257.55
CG-8170-030C	3	4	0	180	306.56
CG-8170-040C	4	2	0	180	510.90
CG-8170-060C	6	1	0	180	1405.00
CG-8170-080C	8	1	0	180	3122.00



Schedule 80 CPVC Fittings - For use with ABS & USCG Approved Pipe

Schedule 80 CPVC Fittings - For use with ABS & USCG Approved Pipe

Part Number	Size	Std Pk	Mstr Ctn	Prod Code	MSRP
-------------	------	--------	----------	-----------	------

Tank Adapters, CPVC New Style Standard with EPDM Gaskets -MARINE

Socket x Socket

150 psi Maximum Internal Pressure Rating @ 73°F (23°C)

CG-8170E-005C	1/2	25	0	180	76.14
CG-8170E-007C	3/4	25	0	180	85.45
CG-8170E-010C	1	25	0	180	99.23
CG-8170E-012C	1-1/4	20	0	180	125.56
CG-8170E-015C	1-1/2	20	0	180	131.75
CG-8170E-020C	2	15	0	180	189.95
CG-8170E-025C	2-1/2	4	0	180	269.80
CG-8170E-030C	3	4	0	180	321.23
CG-8170E-040C	4	2	0	180	533.21
CG-8170E-060C	6	1	0	180	1463.54
CG-8170E-080C	8	1	0	180	3213.26



Tank Adapters, CPVC New Style Standard with FKM Gaskets - MARINE

Socket x Socket

150 psi Maximum Internal Pressure Rating @ 73°F (23°C)

CG-8170V-005C	1/2	25	0	180	99.83
CG-8170V-007C	3/4	25	0	180	114.84
CG-8170V-010C	1	25	0	180	132.94
CG-8170V-012C	1-1/4	20	0	180	163.34
CG-8170V-015C	1-1/2	20	0	180	170.28
CG-8170V-020C	2	15	0	180	257.79
CG-8170V-025C	2-1/2	4	0	180	371.04
CG-8170V-030C	3	4	0	180	441.73
CG-8170V-040C	4	2	0	180	978.39
CG-8170V-060C	6	1	0	180	2458.83
CG-8170V-080C	8	1	0	180	5751.83



Tank Adapter, CPVC Self Aligning with Neoprene Gasket - MARINE

Fipt

75 psi Maximum Internal Pressure Rating @ 73°F (23°C)

CG-8172SA-010C	1	5	0	180	292.68
CG-8172SA-020C	2	4	0	180	441.73
CG-8172SA-030C	3	2	0	180	688.30



Tank Adapter, CPVC Self Aligning with EPDM Gasket - MARINE

Fipt

Tank Adapter, CPVC Self Aligning with EPDM Gasket

CG-8172ESA-010C	1	5	0	180	307.69
CG-8172ESA-020C	2	4	0	180	465.98



Part Number	Size	Std Pk	Mstr Ctn	Prod Code	MSRP
-------------	------	--------	----------	-----------	------

Tank Adapter, CPVC Self Aligning with EPDM Gasket - MARINE

(continued)

Fipt

CG-8172ESA-030C	3	2	0	180	724.75
-----------------	---	---	---	-----	--------



Tank Adapter, CPVC Self Aligning with FKM Gasket - MARINE

Fipt

75 psi Maximum Internal Pressure Rating @ 73°F (23°C)

CG-8172VSA-010C	1	25	0	180	608.14
CG-8172VSA-020C	2	15	0	180	920.51
CG-8172VSA-030C	3	4	0	180	1430.23

Flange One Piece - MARINE

Socket

150 psi Maximum Internal Pressure Rating @ 73°F (23°C)

CG-851-005C	1/2	25	0	172	37.21
CG-851-007C	3/4	25	0	172	38.08
CG-851-010C	1	15	0	172	41.58
CG-851-012C	1-1/4	15	0	172	50.75
CG-851-015C	1-1/2	20	0	172	56.33
CG-851-020C	2	10	0	172	68.19
CG-851-025C	2-1/2	10	0	172	141.29
CG-851-030C	3	10	0	172	147.74
CG-851-040C	4	5	0	172	199.61
CG-851-060C	6	5	0	172	340.04
CG-851-080C	8	2	0	172	1021.95
CG-851-100C	10	2	0	181	1273.69
CG-851-120C	12	2	0	181	1789.10



Flange - Blind = MARINE

150 psi Maximum Internal Pressure Rating @ 73°F (23°C)

CG-853-005C	1/2	25	100	172	55.79
CG-853-007C	3/4	25	0	172	60.49
CG-853-010C	1	20	0	172	75.41
CG-853-012C	1-1/4	20	0	172	85.31
CG-853-015C	1-1/2	15	0	172	119.41
CG-853-020C	2	10	0	172	125.45
CG-853-025C	2-1/2	10	0	172	189.76
CG-853-030C	3	10	0	172	235.91
CG-853-040C	4	8	0	172	319.55
CG-853-060C	6	5	0	172	536.03
CG-853-080C	8	5	0	172	994.25
CG-853-100C	10	3	0	181	1792.74
CG-853-120C	12	2	0	181	3011.80



Schedule 80 CPVC Fittings - For use with ABS & USCG Approved Pipe



Schedule 80 CPVC Fittings - For use with ABS & USCG Approved Pipe

Part Number	Size	Std Pk	Mstr Ctn	Prod Code	MSRP
-------------	------	--------	----------	-----------	------

Flange Van Stone Style with Plastic Ring - MARINE

Socket

150 psi = maximum internal pressure rating @ 73°F (23°C)

CG-854-005C	1/2	25	0	172	37.46
CG-854-007C	3/4	25	0	172	38.31
CG-854-010C	1	15	0	172	41.84
CG-854-012C	1-1/4	15	0	172	51.08
CG-854-015C	1-1/2	20	0	172	56.73
CG-854-020C	2	10	0	172	68.69
CG-854-025C	2-1/2	10	0	172	142.29
CG-854-030C	3	10	0	172	148.98
CG-854-040C	4	5	0	172	201.18
CG-854-060C	6	5	0	172	342.81
CG-854-080C	8	2	0	172	1031.48
CG-854-100C	10	2	0	181	2483.11
CG-854-120C	12	2	0	181	3726.01



Flange Van Stone Style with Plastic Ring - MARINE

Spigot

150 psi Maximum Internal Pressure Rating @ 73°F (23°C)

CG-856-005C	1/2	25	0	172	43.33
CG-856-007C	3/4	25	0	172	46.51
CG-856-010C	1	15	0	172	52.81
CG-856-012C	1-1/4	15	0	172	65.34
CG-856-015C	1-1/2	15	0	172	72.26
CG-856-020C	2	10	0	172	101.14
CG-856-025C	2-1/2	10	0	172	158.41
CG-856-030C	3	10	0	172	173.46
CG-856-040C	4	5	0	172	178.50
CG-856-060C	6	4	0	172	389.75
CG-856-080C	8	2	0	172	794.45
CG-856-100C	10	2	0	181	2667.68
CG-856-120C	12	2	0	181	4007.25



Flange Van Stone Style Class 300 Bolt Pattern Fabricated with Plastic Ring - MARINE

Socket

Molded with fabricated ring - 150 psi = maximum internal pressure rating @ 73°F (23°C)

CG-854005CL300C	1/2	1	25	182	285.09
CG-854007CL300C	3/4	1	25	182	381.96
CG-854010CL300C	1	1	15	182	465.75
CG-854012CL300C	1-1/4	15	0	182	494.80
CG-854015CL300C	1-1/2	20	0	182	513.78
CG-854020CL300C	2	10	0	182	570.73



Part Number	Size	Std Pk	Mstr Ctn	Prod Code	MSRP
-------------	------	--------	----------	-----------	------

Flange Van Stone Style Class 300 Bolt Pattern Fabricated with Plastic Ring - MARINE (continued)

Socket

CG-854025CL300C	2-1/2	10	0	182	679.14
CG-854030CL300C	3	10	0	182	738.05
CG-854040CL300C	4	5	0	182	1163.95
CG-854060CL300C	6	4	0	182	2197.94
CG-854080CL300C	8	3	0	182	2529.14
CG-854100CL300C	10	2	0	183	2859.55
CG-854120CL300C	12	1	0	183	3572.45

Flange One Piece Multi-Bolt Pattern* - MARINE

ASTM Socket x Multi-bolt Pattern Ring

150 psi Maximum Internal Pressure Rating @ 73°F (23°C)

CG-M851-100C	10	2	0	172	718.49
CG-M851-120C	12	2	0	172	1107.34

Hubs fit 10" and 12" ASTM IPS pipe. Rings are manufactured to accept bolt patterns in size 10" and 12" in ANSI Class 150, B.S. 4504 PN10, B.S. 4504 PN16, B.S. 10 Table E for size 10". Consult Spears® Manufacturing Company Technical Services for additional information. Not for use with wafer valves.



Flange Van Stone Style with Plastic Ring ASTM - MARINE

Socket x Multi-bolt Pattern Ring

150 psi Maximum Internal Pressure Rating @ 73°F (23°C)

CG-M854-020C	2	10	0	172	67.35
CG-M854-060C	6	4	0	172	342.81
CG-M854-080C	8	2	0	172	1031.48



Flange Van Stone Style with PN 10/16 Drilling CPVC Ring

ASTM Socket x DIN PN 10/16 Drilling

150 psi Maximum Internal Pressure Rating @ 73°F (23°C)

CG-854-030CDIN	3	10	0	172	148.98
CG-854-040CDIN	4	5	0	172	201.18

Hubs fit 3" or 4" ASTM IPS Pipe. Rings are manufactured to DIN 8063-4 PN 10 and PN 16 bolt patterns.



Clamp-On Saddle x Socket Single Outlet, CPVC Gray - MARINE

with EPDM O-ring Seal & SS Hardware

2"- 4" 235, 6" 200, 8"-12" 150 psi @ 73°F (23°C)

CG-866S-247C	2X1/2	1	10	180	116.16
CG-866S-248C	2X3/4	1	10	180	116.16
CG-866S-249C	2X1	1	10	180	116.16
CG-866S-250C	2X1-1/4	1	10	180	116.16
CG-866S-251C	2X1-1/2	1	10	180	116.16
CG-866S-291C	2-1/2X1-1/2	1	10	180	154.85





Schedule 80 CPVC Fittings - For use with ABS & USCG Approved Pipe

Schedule 80 CPVC Fittings - For use with ABS & USCG Approved Pipe

Part Number	Size	Std Pk	Mstr Ctn	Prod Code	MSRP
-------------	------	--------	----------	-----------	------

Clamp-On Saddle x Socket Single Outlet, CPVC Gray - MARINE

(continued)

with EPDM O-ring Seal & SS Hardware

CG-866S-333C	3X1/2	1	10	180	154.85
CG-866S-334C	3X3/4	1	10	180	154.85
CG-866S-335C	3X1	1	10	180	154.85
CG-866S-336C	3X1-1/4	1	10	180	154.85
CG-866S-337C	3X1-1/2	1	10	180	154.85
CG-866S-338C	3X2	1	10	180	154.85
CG-866S-415C	4X1/2	1	10	180	198.11
CG-866S-416C	4X3/4	1	10	180	198.11
CG-866S-417C	4X1	1	8	180	198.11
CG-866S-418C	4X1-1/4	1	8	180	198.11
CG-866S-419C	4X1-1/2	1	8	180	198.11
CG-866S-420C	4X2	1	8	180	198.11
CG-866S-421C	4X2-1/2	1	4	180	206.48
CG-866S-422C	4X3	1	4	180	217.08
CG-866S-523C	6X1/2	1	4	180	312.19
CG-866S-524C	6X3/4	1	4	180	312.19
CG-866S-525C	6X1	1	4	180	312.19
CG-866S-526C	6X1-1/4	1	4	180	312.19
CG-866S-527C	6X1-1/2	1	4	180	312.19
CG-866S-528C	6X2	1	4	180	312.19
CG-866S-529C	6X2-1/2	1	4	180	330.45
CG-866S-530C	6X3	1	4	180	350.49
CG-866S-532C	6X4	1	4	180	366.65
CG-866S-573C	8X1/2	1	0	180	586.31
CG-866S-574C	8X3/4	1	0	180	586.31
CG-866S-575C	8X1	1	0	180	586.31
CG-866S-576C	8X1-1/4	1	0	180	586.31
CG-866S-577C	8X1-1/2	1	0	180	586.31
CG-866S-578C	8X2	1	0	180	586.31
CG-866S-579C	8X2-1/2	1	0	180	644.81
CG-866S-580C	8X3	1	0	180	677.10
CG-866S-582C	8X4	1	0	180	717.74
CG-866S-585C	8X6	1	0	180	796.46
CG-866S-624C	10X4	1	0	180	948.48
CG-866S-626C	10X6	1	0	180	1089.99
CG-866S-664C	12X4	1	0	180	1187.93
CG-866S-666C	12X6	1	0	180	1378.05

¹ Outlet-sized with Bushing



Clamp-On Saddle x Socket Single Outlet, CPVC Gray - MARINE

with FKM O-ring Seal & SS Hardware

2"- 4" 235, 6" 200, 8"-12" 150 psi @ 73°F (23°C)

CG-866SV-247C	2X1/2	1	10	180	119.84
CG-866SV-248C	2X3/4	1	10	180	119.84
CG-866SV-249C	2X1	1	10	180	119.84

Part Number	Size	Std Pk	Mstr Ctn	Prod Code	MSRP
-------------	------	--------	----------	-----------	------

Clamp-On Saddle x Socket Single Outlet, CPVC Gray - MARINE

(continued)

with FKM O-ring Seal & SS Hardware

CG-866SV-250C	2X1-1/4	1	10	180	119.84
CG-866SV-251C	2X1-1/2	1	10	180	119.84
CG-866SV-291C	2-1/2X1-1/2	1	10	180	160.54
CG-866SV-333C	3X1/2	1	10	180	160.54
CG-866SV-334C	3X3/4	1	10	180	160.54
CG-866SV-335C	3X1	1	10	180	160.54
CG-866SV-336C	3X1-1/4	1	10	180	160.54
CG-866SV-337C	3X1-1/2	1	10	180	160.54
CG-866SV-338C	3X2	1	10	180	160.54
CG-866SV-415C	4X1/2	1	10	180	207.36
CG-866SV-416C	4X3/4	1	10	180	207.36
CG-866SV-417C	4X1	1	8	180	207.36
CG-866SV-418C	4X1-1/4	1	8	180	207.36
CG-866SV-420C	4X2	1	8	180	207.36
CG-866SV-421C	4X2-1/2	1	4	180	219.48
CG-866SV-419C	4X1-1/2	1	8	180	207.36
CG-866SV-422C	4X3	1	4	180	230.65
CG-866SV-523C	6X1/2	1	4	180	330.18
CG-866SV-524C	6X3/4	1	4	180	330.18
CG-866SV-525C	6X1	1	4	180	330.18
CG-866SV-526C	6X1-1/4	1	4	180	330.18
CG-866SV-527C	6X1-1/2	1	4	180	330.18
CG-866SV-528C	6X2	1	4	180	330.18
CG-866SV-529C	6X2-1/2	1	4	180	343.26
CG-866SV-530C	6X3	1	4	180	355.19
CG-866SV-532C	6X4	1	4	180	377.53
CG-866SV-573C	8X1/2	1	0	180	609.20
CG-866SV-574C	8X3/4	1	0	180	609.20
CG-866SV-575C	8X1	1	0	180	609.20
CG-866SV-576C	8X1-1/4	1	0	180	609.20
CG-866SV-577C	8X1-1/2	1	0	180	609.20
CG-866SV-578C	8X2	1	0	180	609.20
CG-866SV-579C	8X2-1/2	1	0	180	644.81
CG-866SV-580C	8X3	1	0	180	703.78
CG-866SV-582C	8X4	1	0	180	745.98
CG-866SV-585C	8X6	1	0	180	827.93
CG-866SV-624C	10X4	1	0	180	985.16
CG-866SV-626C	10X6	1	0	180	1133.09
CG-866SV-664C	12X4	1	0	180	1234.85
CG-866SV-666C	12X6	1	0	180	1432.59

¹ Outlet-sized with Bushing



Hot-Tap Saddle CPVC Gray - MARINE

EPDM with Stainless Steel Cutter & Bolts

2"- 4" 235, 6" 200, 8" 150 psi @ 73°F (23°C)

CG-HT2S-248C	2X3/4	1	5	180	183.33
CG-HT2S-251C	2X1-1/2	1	5	180	378.90

Schedule 80 CPVC Fittings - For use with ABS & USCG Approved Pipe



Schedule 80 CPVC Fittings - For use with ABS & USCG Approved Pipe

Part Number	Size	Std Pk	Mstr Ctn	Prod Code	MSRP
Hot-Tap Saddle CPVC Gray - MARINE (continued)					
EPDM with Stainless Steel Cutter & Bolts					
CG-HT2S-288C	2-1/2X3/4	1	5	180	195.96
CG-HT2S-291C	2-1/2X1-1/2	1	5	180	391.73
CG-HT2S-334C	3X3/4	1	5	180	224.70
CG-HT2S-337C	3X1-1/2	1	5	180	431.85
CG-HT2S-416C	4X3/4	1	5	180	259.53
CG-HT2S-419C	4X1-1/2	1	0	180	456.73
CG-HT2S-524C	6X3/4	1	5	180	291.30
CG-HT2S-527C	6X1-1/2	1	0	180	486.04
CG-HT2S-574C	8X3/4	1	0	180	314.94
CG-HT2S-577C	8X1-1/2	1	0	180	525.55
Lead Free					

Hot-Tap Saddle CPVC Gray - MARINE

FKM with Stainless Steel Cutter & Bolts

2" - 4" 235, 6" 200, 8" 150 psi @ 73°F (23°C)

CG-HT3S-248C	2X3/4	1	5	180	199.65
CG-HT3S-251C	2X-1-1/2	1	5	180	411.48
CG-HT3S-288C	2-1/2X3/4	1	5	180	213.06
CG-HT3S-291C	2-1/2X1-1/2	1	5	180	424.73
CG-HT3S-334C	3X3/4	1	5	180	243.23
CG-HT3S-337C	3X1-1/2	1	5	180	477.90
CG-HT3S-416C	4X3/4	1	5	180	281.53
CG-HT3S-419C	4X1-1/2	1	0	180	496.03
CG-HT3S-524C	6X3/4	1	5	180	316.78
CG-HT3S-527C	6X1-1/2	1	0	180	526.35
CG-HT3S-574C	8X3/4	1	0	180	342.43
CG-HT3S-577C	8X1-1/2	1	5	180	569.04
Lead Free					

Fabricated Expansion Joints - CPVC - MARINE

6" Travel with EPDM O-rings

1/2" - 2" 235 psi @ 73°F (23°C)
2-1/2" - 12" 150 psi @ 73°F (23°C)

CG-826E-005X6C	1/2	10	0	180	497.81
CG-826E-007X6C	3/4	6	0	180	544.73
CG-826E-010X6C	1	5	0	180	525.29
CG-826E-012X6C	1 1/4	4	0	180	898.23
CG-826E-015X6C	1-1/2	4	0	180	674.01
CG-826E-020X6C	2	2	0	180	854.06

Made in the U.S.A.

Suitable for Oil-Free air handling to 25 psi, not for distribution of compressed air or gas

Effective 06/26/2017 See MSRP-1 Sheet or Check Spears® On-line Catalog @ www.spearsmfg.com for Pricing

Part Number	Size	Std Pk	Mstr Ctn	Prod Code	MSRP
-------------	------	--------	----------	-----------	------

Fabricated Expansion Joints - CPVC - MARINE (continued)

6" Travel with EPDM O-rings

CG-826E-025X6C	2-1/2	1	0	180	1048.43
CG-826E-030X6C	3	1	0	180	1177.39
CG-826E-040X6C	4	1	0	180	1736.49
CG-826E-060X6C	6	1	0	180	1866.66
CG-826E-080X6C	8	1	0	180	3541.01
CG-826E-100X6C	10	1	0	180	4527.34
CG-826E-120X6C	12	1	0	180	6244.58



Fabricated Expansion Joints - CPVC - MARINE

12" Travel with EPDM O-rings

1/2" - 2" 235 psi @ 73°F (23°C)
2-1/2" - 12" 150 psi @ 73°F (23°C)

CG-826E-005X12C	1/2	10	0	180	507.01
CG-826E-007X12C	3/4	6	0	180	581.43
CG-826E-010X12C	1	5	0	180	620.23
CG-826E-012X12C	1-1/4	4	0	180	983.21
CG-826E-015X12C	1-1/2	4	0	180	778.54
CG-826E-020X12C	2	2	0	180	993.74
CG-826E-025X12C	2-1/2	1	0	180	1504.44
CG-826E-030X12C	3	1	0	180	1209.03
CG-826E-040X12C	4	1	0	180	2002.78
CG-826E-060X12C	6	1	0	180	2206.33
CG-826E-080X12C	8	1	0	180	4230.54
CG-826E-100X12C	10	1	0	180	4956.26
CG-826E-120X12C	12	1	0	180	6457.94



Fabricated Expansion Joints - CPVC - MARINE

6" Travel with FKM O-rings

1/2" - 2" 235 psi @ 73°F (23°C)
2-1/2" - 12" 150 psi @ 73°F (23°C)

CG-826-005X6C	1/2	10	0	180	536.08
CG-826-007X6C	3/4	6	0	180	586.61
CG-826-010X6C	1	5	0	180	634.06
CG-826-012X6C	1-1/4	4	0	180	665.99
CG-826-015X6C	1-1/2	4	0	180	725.84
CG-826-020X6C	2	2	0	180	919.74
CG-826-025X6C	2-1/2	1	0	180	1091.41
CG-826-030X6C	3	1	0	180	1267.91
CG-826-040X6C	4	1	0	180	1870.00
CG-826-060X6C	6	1	0	180	2010.20
CG-826-080X6C	8	1	0	180	3813.28
CG-826-100X6C	10	1	0	180	4868.10
CG-826-120X6C	12	1	0	180	6457.94



**Schedule 80 CPVC Fittings - For use with ABS & USCG Approved Pipe & EverTUFF® CPVC
Schedule 40 & 80 Marine Pressure Pipe & Fittings**

Schedule 80 CPVC Fittings - For use with ABS & USCG Approved Pipe

Part Number	Size	Std Pk	Mstr Ctn	Prod Code	MSRP
-------------	------	--------	----------	-----------	------



Fabricated Expansion Joints - CPVC - MARINE

12" Travel with FKM O-rings

1/2" - 2" 235 psi @ 73°F (23°C)
2-1/2" - 12" 150 psi @ 73°F (23°C)

CG-826-005X12C	1/2	10	0	180	545.99
CG-826-007X12C	3/4	6	0	180	626.11
CG-826-010X12C	1	5	0	180	667.93
CG-826-012X12C	1-1/4	4	0	180	747.59
CG-826-015X12C	1-1/2	4	0	180	838.40
CG-826-020X12C	2	2	0	180	1070.16
CG-826-025X12C	2-1/2	1	0	180	1620.10
CG-826-030X12C	3	1	0	180	1302.00
CG-826-040X12C	4	1	0	180	2156.76
CG-826-060X12C	6	1	0	180	2375.96
CG-826-080X12C	8	1	0	180	4548.99
CG-826-100X12C	10	1	0	180	5329.30
CG-826-120X12C	12	1	0	180	7624.66

GripLoc™ Coupling - MARINE

WARNING: DO NOT INSERT FINGERS
EPDM Gasket
Pressure Rated to 235 psi @ 73°F



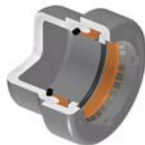
Uses No Solvent Cement.

CG-GL429-005C	1/2	1	40	184	21.10
CG-GL429-007C	3/4	1	36	184	26.04
CG-GL429-010C	1	1	20	184	27.96
CG-GL429-012C	1-1/4	1	15	184	29.60
CG-GL429-015C	1-1/2	1	15	184	29.60
CG-GL429-020C	2	1	10	184	32.90

Gripper is 410 Stainless Steel

GripLoc™ Cap - MARINE

WARNING: DO NOT INSERT FINGERS
EPDM Gasket
Pressure Rated to 235 psi @ 73°F



Uses No Solvent Cement.

CG-GL447-005C	1/2	25	150	184	18.43
CG-GL447-007C	3/4	1	50	184	23.71
CG-GL447-010C	1	1	50	184	25.96
CG-GL447-012C	1-1/4	1	25	184	35.60
CG-GL447-015C	1-1/2	1	25	184	41.40
CG-GL447-020C	2	1	25	184	47.54

Gripper is 410 Stainless Steel

Valves - For use with ABS & USCG Approved Piping Systems

Part Number	Size	Std Pk	Mstr Ctn	Prod Code	MSRP
-------------	------	--------	----------	-----------	------

True Union 2000 Industrial Ball Valves - EPDM - MARINE

Socket



CG-1829-005C	1/2	1	18	179	90.90
CG-1829-007C	3/4	1	18	179	114.48
CG-1829-010C	1	1	12	179	136.29
CG-1829-012C	1-1/4	1	8	179	216.66
CG-1829-015C	1-1/2	1	8	179	228.83
CG-1829-020C	2	1	4	179	306.03
CG-1822-025C	2-1/2	1	0	179	686.14
CG-1822-030C	3	1	0	179	802.25
CG-1822-040C	4	1	0	179	1453.73
CG-1822-060C	6	1	0	179	3094.75
CG-1822-080C	8	1	0	179	4116.05

1/2" - 4" ABS type approved
1/2" - 8 USCG applications

True Union 2000 Industrial Ball Valves - FKM - MARINE

Socket



CG-1839-005C	1/2	1	18	179	101.01
CG-1839-007C	3/4	1	18	179	127.23
CG-1839-010C	1	1	12	179	151.43
CG-1839-012C	1-1/4	1	8	179	240.80
CG-1839-015C	1-1/2	1	8	179	254.25
CG-1839-020C	2	1	4	179	351.80
CG-1832-025C	2-1/2	1	0	179	762.33
CG-1832-030C	3	1	0	179	891.46
CG-1832-040C	4	1	0	179	1615.23
CG-1832-060C	6	1	0	179	3438.39
CG-1832-080C	8	1	0	179	4573.08

1/2" - 4" ABS type approved
1/2" - 8 USCG applications

True Union 2000 Standard Ball Valves - EPDM - MARINE

Socket



CG-3629-005C	1/2	1	18	179	72.69
CG-3629-007C	3/4	1	18	179	91.59
CG-3629-010C	1	1	12	179	109.04
CG-3629-012C	1-1/4	1	8	179	173.35
CG-3629-015C	1-1/2	1	8	179	183.05
CG-3629-020C	2	1	4	179	244.84
CG-3622-025C	2-1/2	1	0	179	548.91
CG-3622-030C	3	1	0	179	641.81
CG-3622-040C	4	1	0	179	1162.96



Valves - For use with ABS & USCG Approved Piping Systems

Part Number	Size	Std Pk	Mstr Ctn	Prod Code	MSRP
-------------	------	--------	----------	-----------	------

True Union 2000 Standard Ball Valves - FKM - MARINE

Socket



CG-3639-005C	1/2	1	18	179	80.83
CG-3639-007C	3/4	1	18	179	101.79
CG-3639-010C	1	1	12	179	121.15
CG-3639-012C	1-1/4	1	8	179	192.68
CG-3639-015C	1-1/2	1	8	179	203.40
CG-3639-020C	2	1	4	179	281.46
CG-3632-025C	2-1/2	1	0	179	548.91
CG-3632-030C	3	1	0	179	641.81
CG-3632-040C	4	1	0	179	1162.96

True Union 2000 Vertical 3-Way Ball Valves, L-Port, EPDM - MARINE

Socket



CG-4722L1-005C	1/2	1	12	179	217.36
CG-4722L1-007C	3/4	1	8	179	255.05
CG-4722L1-010C	1	1	8	179	309.99
CG-4722L1-012C	1-1/4	1	8	179	375.00
CG-4722L1-015C	1-1/2	1	8	179	433.51
CG-4722L1-020C	2	1	4	179	531.91
CG-4722L1-025C	2-1/2	1	0	179	1870.69
CG-4722L1-030C	3	1	0	179	1909.04
CG-4722L1-040C	4	1	0	179	3299.90

USCG Application Only

True Union 2000 Vertical 3-Way Ball Valves, L-Port, FKM - MARINE

Socket



CG-4732L1-005C	1/2	1	12	179	235.35
CG-4732L1-007C	3/4	1	8	179	277.84
CG-4732L1-010C	1	1	8	179	345.25
CG-4732L1-015C	1-1/2	1	8	179	475.28
CG-4732L1-012C	1-1/4	1	8	179	441.93
CG-4732L1-020C	2	1	4	179	617.54
CG-4732L1-025C	2-1/2	1	0	179	1891.76
CG-4732L1-030C	3	1	0	179	1925.85
CG-4732L1-040C	4	1	0	179	3332.03

USCG Application Only

True Union 2000 Horizontal 3-Way Diverter Ball Valves, EPDM, T-Port - MARINE

Socket



CG-5022T1-005C	1/2	1	12	179	218.59
CG-5022T1-007C	3/4	1	8	179	260.55
CG-5022T1-010C	1	1	8	179	315.96
CG-5022T1-012C	1-1/4	1	8	179	366.14

Made in the U.S.A.

Suitable for Oil-Free air handling to 25 psi, not for distribution of compressed air or gas

Effective 06/26/2017 See MSRP-1 Sheet or Check Spears® On-line Catalog @ www.spearsmfg.com for Pricing

Part Number	Size	Std Pk	Mstr Ctn	Prod Code	MSRP
-------------	------	--------	----------	-----------	------

True Union 2000 Horizontal 3-Way Diverter Ball Valves, EPDM, T-Port - MARINE (continued)

Socket

CG-5022T1-015C	1-1/2	1	8	179	428.28
CG-5022T1-020C	2	1	0	179	525.43
CG-5022T1-025C	2-1/2	1	0	179	1771.09
CG-5022T1-030C	3	1	0	179	1807.09
CG-5022T1-040C	4	1	0	179	3272.78

USCG Application Only

True Union 2000 Horizontal 3-Way Diverter Ball Valves, FKM, T-Port - MARINE

Socket



CG-5032T1-005C	1/2	1	12	179	236.81
CG-5032T1-007C	3/4	1	8	179	280.46
CG-5032T1-010C	1	1	8	179	348.14
CG-5032T1-012C	1-1/4	1	8	179	410.50
CG-5032T1-015C	1-1/2	1	8	179	468.75
CG-5032T1-020C	2	1	0	179	612.35
CG-5032T1-025C	2-1/2	1	0	179	1883.15
CG-5032T1-030C	3	1	0	179	1912.65
CG-5032T1-040C	4	1	0	179	3309.73

USCG Application Only

True Union 2000 Industrial Ball Check Valves - EPDM - MARINE

Socket



CG-4529-005C	1/2	1	18	179	115.39
CG-4529-007C	3/4	1	18	179	138.10
CG-4529-010C	1	1	18	179	162.95
CG-4529-012C	1-1/4	1	12	179	280.65
CG-4529-015C	1-1/2	1	8	179	280.65
CG-4529-020C	2	1	8	179	374.85
CG-4522-025C	2-1/2	1	0	179	785.51
CG-4522-030C	3	1	0	179	1043.59
CG-4522-040C	4	1	0	179	1723.74
CG-4522-060C	6	1	0	179	3558.85
CG-4522-080C	8	1	0	179	4186.91

1/2" - 4" ABS type approved
1/2" - 8 USCG applications

True Union 2000 Industrial Ball Check Valves - FKM - MARINE

Socket



CG-4539-005C	1/2	1	18	179	128.45
CG-4539-007C	3/4	1	18	179	153.48
CG-4539-010C	1	1	18	179	181.04
CG-4539-012C	1-1/4	1	12	179	311.55
CG-4539-015C	1-1/2	1	8	179	311.55
CG-4539-020C	2	1	8	179	417.68
CG-4532-025C	2-1/2	1	0	179	872.75
CG-4532-030C	3	1	0	179	1136.65
CG-4532-040C	4	1	0	179	1916.48



EverTUFF® CPVC Schedule 40 & 80 Marine Pressure Pipe & Fittings

Valves - For use with ABS & USCG Approved Piping Systems

Part Number	Size	Std Pk	Mstr Ctn	Prod Code	MSRP
-------------	------	--------	----------	-----------	------

True Union 2000 Industrial Ball Check Valves - FKM - MARINE

(continued)

Socket

CG-4532-060C	6	1	0	179	3953.78
CG-4532-080C	8	1	0	179	5270.24
1/2" - 4" ABS type approved 1/2" - 8 USCG applications					

Compact 2000 Ball Valves - EPDM - MARINE

Socket

CG-6622-005C	1/2	10	120	179	34.53
CG-6622-007C	3/4	10	80	179	45.54
CG-6622-010C	1	10	0	179	56.91
CG-6622-012C	1-1/4	6	0	179	93.15
CG-6622-015C	1-1/2	5	0	179	115.21
CG-6622-020C	2	8	0	179	150.94
USCG Application Only					

Compact 2000 Ball Valves - FKM - MARINE

Socket

CG-6632-005C	1/2	10	120	179	38.43
CG-6632-007C	3/4	10	80	179	51.18
CG-6632-010C	1	10	0	179	64.00
CG-6632-012C	1-1/4	6	0	179	115.11
CG-6632-015C	1-1/2	5	0	179	128.00
CG-6632-020C	2	8	0	179	169.56
USCG Application Only					

Butterfly Valve, Standard - EPDM - MARINE

Lever Handle

10" & 12" Valve Gear Operated Only

CG-722311-015C	1-1/2	1	0	179	519.26
CG-722311-020C	2	1	0	179	553.44
CG-722311-025C	2-1/2	1	0	179	587.69
CG-722311-030C	3	1	0	179	640.51
CG-722311-040C	4	1	0	179	740.04
CG-722311-060C	6	1	0	179	1094.48
CG-722311-080C	8	1	0	179	1859.31
CG-722321-100C	10	1	0	179	3631.59
CG-722321-120C	12	1	0	179	5130.24
1-1/2" - 6" ABS type approved 1-1/2" - 12 USCG applications					

Part Number	Size	Std Pk	Mstr Ctn	Prod Code	MSRP
-------------	------	--------	----------	-----------	------

Butterfly Valves, Standard - FKM - MARINE

Lever Handle

10" & 12" Valve Gear Operated Only

CG-723311-015C	1-1/2	1	0	179	1050.95
CG-723311-020C	2	1	0	179	1085.15
CG-723311-030C	3	1	0	179	1262.34
CG-723311-040C	4	1	0	179	1579.49
CG-723311-060C	6	1	0	179	2524.75
CG-723311-080C	8	1	0	179	4272.14
CG-723321-100C	10	1	0	179	9277.96
CG-723321-120C	12	1	0	179	12060.74
1-1/2" - 6" ABS type approved 1-1/2" - 12 USCG applications					

Wafer Butterfly Valves -EPDM - MARINE

Lever Handle

10" & 12" Valve Gear Operated Only

CG-752311-020C	2	1	0	179	553.44
CG-752311-025C	2-1/2	1	0	179	587.69
CG-752311-030C	3	1	0	179	640.51
CG-752311-040C	4	1	0	179	740.04
CG-752311-060C	6	1	0	179	1094.48
CG-752311-080C	8	1	0	179	1859.31
CG-752321-100C	10	1	0	179	3631.59
CG-752321-120C	12	1	0	179	5130.24
2" - 6" ABS type approved 2" - 12 USCG applications					

Wafer Butterfly Valves -FKM - MARINE

Lever Handle

10" & 12" Valve Gear Operated Only

CG-753311-020C	2	1	0	179	1085.15
CG-753311-025C	2-1/2	1	0	179	1178.43
CG-753311-030C	3	1	0	179	1262.34
CG-753311-040C	4	1	0	179	1579.49
CG-753311-060C	6	1	0	179	2524.75
CG-753311-080C	8	1	0	179	4272.14
CG-753321-100C	10	1	0	179	9277.96
CG-753321-120C	12	1	0	179	12060.74
2" - 6" ABS type approved 2" - 12 USCG applications					

MARINE Solvent Cement & Primer - For Use with ABS & USCG Approved Schedule 40 & 80 Piping Systems



MARINE Solvent Cement & Primer - For Use with ABS & USCG Approved Schedule 40 & 80 Piping Systems

Part Number	Size	Std Pk	Mstr Ctn	Prod Code	MSRP
-------------	------	--------	----------	-----------	------

Marine-24 Solvent Cement - Gray

Requires primer



CG-MARINE24-030	Quart	12	0	178	60.64
CG-MARINE24-040	Gallon	6	0	178	209.39

PRIMER-70 Purple Industrial Strength Primer - MARINE



PRIM70P-030	Quart	12	0	709	36.66
PRIM70P-040	Gallon	6	0	709	120.46

PRIMER-70 Clear Industrial Strength Primer - MARINE



PRIM70C-030	Quart	12	0	709	36.66
PRIM70C-040	Gallon	6	0	709	120.46